

Contents

Title	Author	Page
24Acres		
Featured Fruits from Our Orchard: Discovery and Engremont Russet	David Thomas	22
Amenity Fund		12
Articles		
Bottisham and Burwell Photographic Club	Barry Coles	5
Burwell Museum Coach Trips 2015		5
Burwell Museum Events 2015		10
Burwell and Reach Car Scheme		7
Cambridge Community Fair		11
Cambridge Fire and Rescue Service: Think Twice About Jumping into Water this Summer		11
Cambridge Open Studios		4
Community Solar Farm	Andy Rankin	9
Ely and District Model Railway Club		10
Heritage Street Lighting Update	David Parr	12
Local Village Fetes		13
Looking Back		8
Meeting Sue Briscoe		26
One Hundred Club		9
Outside Edge Art Group	Joss Goodchild	3
Reach Fair 2015 Finances		6
Reach Fair 2015	Grahame Radford	7
Wine Tasting		28
Bus Timetable		45
Church		
Church Services		44
Letter From the Vicarage	Eleanor Williams	42
Church News	Pat Chalmers	43

Title	Author	Page
Contact Information		48
Cookery: Food Focus – Reach Boys Rise to the Challenge	Catherine Gibson	30
Cookery: Ray Bateman’s Recipe for a Winning Victoria Sponge		31
Crossword	Puzzleric	36
Crossword Solutions		24
Days Gone By	David Parr	25
Diary Dates		46
Editor’s Notes		2
Events Team		12
Kids Page	Susie Tucker	35
Little Windmills		34
Parish Council		
Draft Minutes		40
Know Your Parish Council		43
Pets Corner		34
Plants and Planting		
Swaffham Prior Village Gardeners		15
Tales from a Reach Garden	Danuta Gibson	18
Wildlife in the Garden	Cambridge Botanic Garden	14
Snakehall Farm	Maz Baker	20
Sport and Recreation		
Cricket	Ross Clark	39
Equestrian News	Lorna Steven	38
Newmarket Cycling and Triathlon Club		39
Swaffham Prior Primary School	Hannah Curtis	32
Wicken Fen and Anglesey Abbey News	Howard Cooper	23
Wildlife		
One Swallow....	Alison Lewis	14
Out and About	Joss Goodchild	15

A Date for your Diary:
Reach Sports Day
Sunday 6th September
2.30pm

From the Editor

The Outside Edge Art Group have their annual exhibition in St Cyriac's Church, Swaffham Prior, over the first two weekends of July as part of the Cambridgeshire Open Studios which runs throughout the weekends of July.

And Reach Community Solar Farm has its first AGM in the Village Centre on Thursday 25th June.



On Sunday 5th July Evensong followed by Afternoon Tea will take place in St Etheldreda Church to commemorate and thank Maisie Whitehead who made a substantial donation to the church. Do come along and also in the future look out for the plans of some of the proposed improvements to the church.

Reach Fair was very much enjoyed and the weather was excellent. If you do have any comments or suggestions for future Fairs do let Grahame Radford know. In this issue we look back briefly at a past Fair when Fooling About raised the sum of £10.12½.

Catherine Gibson organised the Tea and Cake Stall at Reach Fair to great effect, and organised the first Reach Boys Bake Off. Ray Bateman's winning Victoria Sponge was most impressive and he is going to be a hard act to beat.

Nick Acklam recently planted some oaks on the 24Acres and we thank him for organising this. We enjoyed another Wine Tasting evening and thank Hugh de Lacy and Marie Bambrick. Apparently the research for the Wine Tasting evenings is not all pleasure as some of the wines are yuk!

It's swallows that seem to be attracting the attention of our nature lovers but Joss lists a whole host of seasonal visitors. My own observation is that the swan has had nine cygnets this year – I couldn't believe my eyes as I counted them.

Danuta is squishing aphids and talking fruit cages. Be assured she and Richard are not cracking up. Snakehall Farm just gets better and better – with its new kitchen and enhanced range of products including wonderful cut flowers.

Laura Steven achieved great horse riding results competing in Cagnes-Sur-Mer, France, no less! Liz Tabecki and her supporters are trying to raise funds for the menage on the 24Acres. So if you can assist and/or have some ideas - do contact her.

Read this magazine carefully and find out how useful old tights can be.

PS Don't forget we have a super tennis court!

Claire Halpin-McDonald

Front cover photo: Hugh de Lacy
Cover photographs: Alison Lewis

About the Magazine

The purpose of *Within Reach* is to serve the whole village by circulating information and interesting articles free to every household. Additional copies are available at a charge of £2.50. Issues are published bi-monthly covering the months of Feb/Mar, Apr/May, June/July, Aug/Sept, Oct/Nov and Dec/Jan.

Copies of the Minutes of Parish Council meetings and of *Out of Reach* and *Within Reach* magazines can be found on the village website www.reach-village.co.uk.

The next copy date is 15th July 2015. This magazine is approved and printed by Reach Parish Council.

Editorial Team

Editor	Claire Halpin-McDonald
Production	Claire Halpin-McDonald David Parr
Advertising/Treasurer	David Parr
Distribution	Freda Lloyd, Grahame Radford, Joyce Harrison
Roving Reporter	Marie Bambrick
Roving Photographer	Hugh de Lacy
Allotments/24Acres	David Thomas
Bell ringing	Lesley Boyle
Cookery	Catherine Gibson
Cricket	Ross Clark
Days Gone By	David Parr
Equestrian News	Lorna Steven
Fen Chitchat	Lesley Boyle
Gardening	Danuta Gibson
Kids' Page	Susie Tucker
Memories	Anita Folkes
Parish Council	Susan Bailey
Snakehall Farm	Maz Baker
Sport	Juliet Vickery
Swaffham Prior School	Hannah Curtis
Wicken Fen	Howard Cooper
Wildlife	Joss Goodchild Alison Lewis

Outside Edge Art Group



St Cyriac Church by Hannah Webb

Three artists from Reach - Hannah Webb, Dafila Scott and Joss Goodchild - together with Exning-based Vee Wallace, Heather Maunders from Ely and Cathy Parker from Cambridge, will exhibit their paintings this July at local St Cyriac Church, Swaffham Prior.

The event takes place between 11am and 6pm on Saturdays 4th and 11th July, Sundays 5th and 12th July 2015.

The beautiful light and airy church interior is an ideal place to showcase artworks. Subject matter varies but landscapes, portraits, wildlife and tree studies are displayed in representational, semi-abstract and abstract styles.

The Outside Edge Art Group exhibit under the prestigious Cambridge Open Studio scheme which draws visitors to this region throughout July.

Admission is free and all are very welcome.



Pattern of fields by Dafila Scott



Fen Owl by Joss Goodchild



**St Etheldreda's
Church
Reach**

**Celebration Evensong
followed by
Afternoon Tea
Sunday 5th July 2015
3.30pm**

**To commemorate
and give thanks
for the generosity
of Maisie Whitehead**

**All welcome to join the choir
for this occasion
Rehearsal in Reach Church
7pm Friday 3rd July
Offers of help with the tea welcome
Contact Pam 742924 or Eleanor 741262**

Cambridge Open Studios

Cambridge Open Studios (COS) is thrilled to announce that its membership numbers for 2015 have grown by over 10%, continuing its excellent record of year on year expansion.



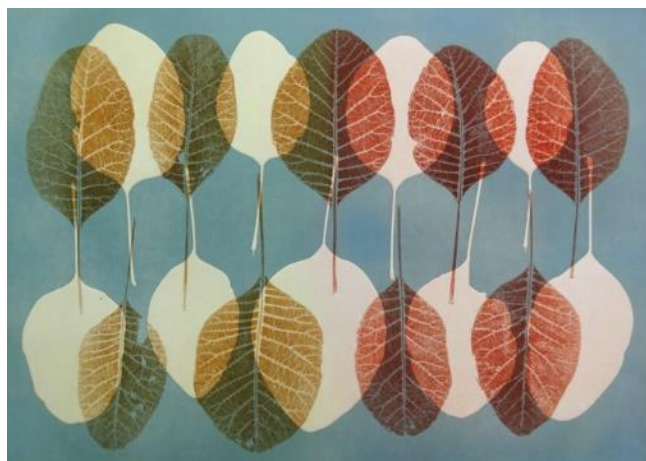
The artists' network, which is one of the oldest Open Studios programmes in the country, has seen steady growth since it began over 50 years ago and represents a flourishing community of artists, craftspeople and designer-makers throughout Cambridgeshire.



Jessie Marlon

This July, 323 Cambridge Open Studio artists will be taking part in 219 different locations. There will be a wide range of artistic media to see including painters, sculptors, jewellers, photographers, illustrators, furniture makers and many more. 112 new artists have joined for 2015, promising an even greater variety of art and events for the public to enjoy.

Over the weekends of July 4/5, 11/12, 18/19 and 25/26, artists will open their doors free of charge, welcoming the public to view their work, learn how it's created and even in some cases, you can try your hand. Covering the whole county, the Open Studios initiative includes many outlying towns and villages as well as Cambridge city itself.



Susie Turner



Paul Abbott

COS aims to bring artists together with the public, making studios and workshops accessible at certain times of the year. Working to demystify art and spread the word about the enormous amount of talent we have living and working in our county today, the annual summer Open Studios initiative sees hundreds of artists opening their workshops and studios to the public to share their craft.



Tricia Taylor

The organisation promotes the making of original works of art and craft and works to forge a lasting relationship between local people and local makers. Participating studios will be open from 11am – 6pm though it is worth pointing out not all studios are open on all of the weekends, so do check the website www.camopenstudios.co.uk for opening dates or refer to the free Guide Book which lists all artists and groups participating.

It really is a wonderful day out. Pick up your Guide Book, plan yourself a route and why not take in a pub lunch along the way. And remember to look out for the synonymous yellow flags that will be flying outside the 'open' studios.

Entry: FREE

To find out more visit www.camopenstudios.co.uk.

Bottisham and Burwell Photographic Club

Our last meeting was on 5 May 2015 when The Roger Human Trophy Competition (print) was held. This was followed by our social evening dinner on Friday 15 May when the cups and trophies for the year were presented.

During the summer, the annual club outing is to The Black Country Museum, Dudley, West Midlands on Saturday 4 July. Just to give you an idea of the timing on the day, the coach will depart Burwell at 8.30am and return from Dudley at 5.00pm. The coach cost is £17.50, entry is £14.50 per person (group rate), concessions £11.00. Anyone who may be interested in joining the club next year and would like to accompany us, please contact our Secretary Daphne Hanson (see below) to see if space is available. There is obviously only a short window in which to enquire.



Minnsmere Photo: Barry Coles

The club is now on summer break and will commence our 43rd year on 8 September 2015 at 7:30pm at Lode Chapel CB25 9EW. This evening, as with all our meetings, new members are welcome to attend. The current members will be bringing 3 prints/digital images that they have taken during the summer for viewing. Last year's award winning prints will also be displayed.

Our programme for the year 2015/16 is wide and varied which is always our aim. The programme will be:

Tuesday 8 September

See above.

Tuesday 15 September

Permajet Colour Management Presentation by Ian Windebank from The Imaging Warehouse. Stratford-upon-Avon.

During this evening, monitor and printer profiling will be discussed along with Permajet papers and their uses.

Tuesday 22 September

'Taken on the Club Outing'. A new competition for this year - "The Metcalfe Trophy" donated by Gerry Metcalfe who has been Chairman for the past ten years. The competition is to consist of four projected digital images taken on the day of the annual club outing.

Our Hon Secretary for many years: **Daphne Hanson** DPAGB APAGB was earlier in the year elected as president-elect of the East Anglian Federation of Photographic Societies (EAF) and will take up her Presidency next February to serve for two years. Daphne previously served as President from 1998 – 2000. The EAF is the umbrella organisation for all the photographic clubs in East Anglia and was founded in 1910, with 127 current member clubs.

Further details of our programme can be viewed on our website, see below.

The club welcomes guests to any meeting at our venue, Lode Chapel **CB25 9EW** from 7:30 – 9:30pm. Fee £3.00 including refreshments, refunded on joining.

Annual subscriptions: Adult: £40.00, Joint Membership: £67.00, Student: £21.00. Refreshments 50p.

For further details contact:

Hon. Secretary. **Mrs Daphne Hanson** DPAGB APAGB
01638 741106

www.bottburpc.org

Burwell Museum Coach Trips 2015



Supported by

The National Lottery
through the Heritage Lottery Fund



Brightlingsea Tuesday 23rd June £16.00

Cromer and Wells

Tuesday 28th July £16

Hunstanton and Lavender Farm

Tuesday 18th August £15.00

Sheringham 40s Day

Sunday 20th September £17.00

Boundry Mills, Downtown and Newmarket

Friday 30th October £17.50

Wickstead Park Christmas Show and Dinner and Tea

December 3rd £39.00

Tickets only from Tina's - for information ring 741581 or 741705.

REACH FAIR 2015 FINANCES

	2015		2014		2013	
	Income	Expenses	Income	Expenses	Income	Expenses
Commercial Stalls						
Perrett - Fair	£1,510.00		£1,510.00		£1,480.00	
Bar	£750.00		£750.00		£750.00	
Food Stalls	£2,120.00		£2,130.00		£2,300.00	
Craft Stalls	£730.00		£495.00		£810.00	
Reach Residents Stalls	£30.00		£30.00		£90.00	
Entertainment Stalls	£700.00		£497.50		£625.00	
Information/Charity Stalls	£30.00		£250.00		£155.00	
Village Stalls						
Tea Tent & Cake Stall	£1,713.96	£368.82	£1,202.55	£390.55	£713.00	
BBQ	£2,548.88	£1,115.54	£2,529.35	£1,874.35	£482.50	£472.80
Bottle/Plant Stall	£539.20	£57.65	£320.55	£42.13	£240.02	
Cake Stall	£0.00	£0.00	£101.50	£0.00	£141.10	
Salad Stall	£632.61	£125.00	£470.00	£159.01	£349.78	
Coconuts	£169.05	£50.00	£243.83	£0.00	£262.80	
Cream Teas	£0.00		£0.00		£100.00	
Football	£182.60	£0.00	£145.00	£0.00	£131.20	
Village Games	£0.00	£34.24	£188.16	£67.18	£93.44	
Smash the Crockery	£572.10	£0.00	£223.15	£0.00	£194.20	
Bric-a-Brac	£30.00		£62.20		£45.00	
Books/T shirts/Progs	£76.30		£29.00		£53.00	
Soup Stall	£0.00		0		£57.05	
General						
Car Park	£3,386.39	£3,585.13	£3,334.00	£2,528.56	£2,743.07	£2,098.27
Programme Adverts	£150.00		£150.00		£150.00	
Programme Donations	£0.00		£0.00		£67.45	
Traction Engine		£60.00		£0.00		£60.00
Grass Cutting		£0.00		£0.00		£10.00
First Aid service		£289.80		£0.00		£508.80
General Expenses		£278.98		£24.00		£18.00
PA System		£1,000.00		£500.00		£420.00
Entertainments		£200.00		£220.00		£225.00
Advertising		£0.00		£70.15		£0.00
Toilet Hire		£660.00		£660.00		£660.00
Police		£415.42		£520.54		£520.54
Straw Bales	£0.00	£350.00	£112.00	£315.00		£185.00
Raptors		£0.00		£195.00		£190.00
Dance Troup		£0.00		£0.00		£0.00
Programmes		£240.00		£240.00		£380.00
Summary						
Commercial Stalls	£5,870.00		£5,662.50		£6,210.00	
Village Stalls	£10,001.09		£9,111.29		£5,823.61	
Totals	£15,871.09	£8,830.58	£14,773.79		£12,033.61	
less Expenses	£8,830.58		£7,806.47	£7,806.47	£5,748.41	
Profit	£7,040.51		£6,967.32		£6,285.20	
Share to Village Hall 75%	£5,280.38		£5,225.49		£4,713.90	
Share to Amenity Fund	£1,760.13		£1,741.83		£1,571.30	
Expenses breakdown						
Car Park						
Hire of parking field		£1,000.00		£1,007.49		£1,020.97
Parking Personnel		£250.00		£250.00		£0.00
Traffic Management		£1,335.13		£1,271.07		£1,077.30
BBQ						
Food		£770.57		£879.43		
Other		£344.97		£994.92		

Note: figures in *italics* are provisional and subject to change.

Reach Fair 2015

So, the 2015 Fair has been and gone! But what a great day it was. The Fair is always weather dependent and this year we had a perfect day - warm, with a slight cooling breeze and plenty of sunshine to draw the crowds.



The Committee made a few changes this year, by way of improving the day for everyone. As always, some work and some don't. The change of venue for the quiz on Sunday seemed to have gone down well with those that attended but we were slightly down on numbers. Whether this was because of the venue or just circumstances on the day I am not sure, but it was a fun evening. The winning team, Fullers Red, donated the prize money to the earthquake relief in Nepal, where some of the team visited only last year!



Janet Hall and Alison Lewis on the Bottle Stall

Set up this year was delayed slightly due to the weather on the Sunday morning but all was accomplished in good time, thanks to lots of help.

The re-positioning of the stalls and arena on the Green, together with the introduction of a stage also seem to have met with general approval, although the volume level on occasions needs to be addressed. Unfortunately, due to last minute health problems, Richard from Patchwork Circus was unable to attend and we thank Jezzo for stepping in with additional material to fill the gap. The Raptor Foundation were also missing, which was unfortunate as they are always popular. However, despite these unforeseen situations, there was plenty to see, plenty to do and plenty to eat and drink. The trade stands were again fully supported with a good selection of products and information available.

From the interim figures it is obvious that our own village stalls did very well and we will endeavour to keep the momentum going in the future.

Reach Fair is a massive event in the context of the size of the village and it is only possible with the help of a large number of people who volunteer their services on the day and beforehand to help in many, many ways.

On behalf of the Committee, I would like to take this opportunity to thank all of you for your continued enthusiasm and support, without which we could not hope to provide such an enjoyable and entertaining day for the many thousands of people who attend. Nor would we be able to raise the sums necessary to keep the Village Centre running for the benefit of everyone in Reach.

See you in 2016!

Grahame Radford

Chairman - Reach Village Centre Committee



Burwell and Reach Car Scheme

If you are unable to use conventional transport the scheme can help you to travel from Burwell or Reach to Doctors, Dentist, Chiropodist, Opticians, village shopping or visits to relatives/friends at home or in hospital

Transport **cannot be provided** for hospital **OutPatient** appointments

Contact Hours: 8.30am – 5.00pm Monday – Friday, please give us at least **48 hour's notice**

01638 742543 answer phone.

You will be contacted after you have left your request for a journey



Looking Back

Treasurer's Report of Reach Fair

<u>Income</u>		<u>Expenses</u>	
Darts Night	48.74	Hire of Tent	15.00
Cheese & Wine	3.77	Adverts	26.90
Dog Show	59.08½	Poster	9.72
Horse Sale	20.99	Ins. Cover	15.00
Bingo	2.68	Engraving Cup	1.15
Drag Night	34.75	Miscellaneous	7.15
Refreshments	40.47½		
Donations	19.00		
Grand Draw	29.10		
Sale of Toys etc.	16.00		
fooling about	10.12½		
	£284.71½		£74.92

Profits from Cycle Race still to be settled.

Extract: Out of Reach September 1976

'Any Old Tights'

Mrs. Peacock will be pleased to receive any throw-outs before the end of October. Our new village trees are expected about the end of the month and old tights are ideal for anchoring the young trees to their stakes. Would anyone willing to help with planting make themselves known to a Parish Council member and watch the notice boards for an announcement of the trees' arrival in the village.

Extract: Out of Reach October 1976

and the Parish Council have accepted 50 trees for autumn planting at the following sites:

- around the new cemetery (10 Limes)
- between Ditchfield and the railway bridge (6 hornbeam)
- on the village green (Beech, 2 near the Dyke, 2 either side swings)
- on the Drying Green (2 Silver Birch, 2 Cherry)
- along the Hythe (15 assorted)
- at the end of Chapel Lane (1 Birch)
- on private properties (10)

Extract: Out of Reach October 1976

Community Solar Farm – Share Offer



The sun was shining hard on the solar farm stall at Reach Fair. We connected up a couple of solar panels to our trusty smoothie maker to churn out delicious cool drinks for anyone who was passing. And our Scaletrix set powered directly by solar panels was a real hit too with the younger generation (and the not-so-young too!).



On a more serious note we were also able to get the word out to lots of people about our ambition to generate clean renewable energy for the village from a co-operative project which supports the local community as well as giving returns to those that invest. We had lots of interest and support for the project. As I write, this the share offer has two weeks left to run, and we are well on our way to our target - though haven't crossed the finishing line yet.

Our AGM will be on the 25th June in the village Centre. We expect to be making final decisions and setting a timetable for proceeding then, so do keep an eye on the reachsolarfarm.co.uk website for news, or sign up for our email newsletter.

Andy Rankin

FRIENDS OF BOTTISHAM VILLAGE COLLEGE PRESENT

CASINO

BOTTISHAM
BALL 2015

SATURDAY 27TH JUNE
7^{PM} - MIDNIGHT

BLACK TIE ♦ WELCOME DRINK ♦ AUCTION
FOUR COURSE MEAL ♦ MAGICIAN
LIVE MUSIC FROM 'SOUL KITCHEN'

*TICKET PRICE £60 * TO PURCHASE CONTACT: FRIENDS@BOTTISHAMVC.ORG

The VILLAGE CENTRE 100 CLUB for 2015

Help raise money to run the Village Centre

Tickets are just £10 for a full year

We have eight draws of £20 on the third
Wednesday of the month and
two draws of £50 in July and December

100 CLUB WINNERS

April: Catherine Gibson £20

Please contact Thomasina on 07787 520589
to be part of the draw

Burwell Museum Events 2015



Enjoy visiting our new tea room, family activities and outdoor play area, refreshed displays and a working windmill (subject to suitable weather conditions). Remember to pick up some information about our brilliant

birthday parties and ask about hiring spaces for your own activities. We also have a fantastic new programme of events with something for everyone, from Saturday mill tours and fascinating talks to holiday activities for children aged 3+.



Dennis Millard – our first ever customer in the brand new tea room at the museum

Here's some of our forthcoming events:

Fun on the Farm

Sunday 14th June. Meet your favourite farmyard friends and have a go at some animal-inspired family activities.

Friend of Burwell Museum Fete

Sunday 12th July – free entry. Enjoy exciting stalls, craft activities, a tombola and some old-fashioned games. Something for everyone!

Opening Times

Thursdays, Sundays and Bank Holiday Mondays, Easter to October. 11am-5pm (unless otherwise stated). Last admission 4pm.

Admission Charges

Adults: £4; Children 3-16yrs: £2
Children under 3 years: free (unless otherwise stated)
Season Tickets: Individual £15; Family £25

Website: www.burwellmuseum.org.uk
Tel: 01638 605544
Email: education@burwellmuseum.org.uk
Mill Close, Burwell, Cambridgeshire, CB25 0HL

Ely and District Model Railway Club – Superb New Clubroom! Calling New Members!



Our friendly, inclusive Club has moved into a purpose converted new Clubroom. We now have plenty of room to build our two new exhibition layouts. This large, comfortable space is located between Ely and Soham. We are now able to welcome new members.

“Westgate Park”, a 20ft long ‘N’ gauge layout, is mostly operational and work will soon start on scenery and buildings. “Wickham Market”, our new 20 x 11ft ‘OO’ gauge layout, will become the successor to our current exhibition layout, “Thurston”. It’s fully wired and work has started on scenery buildings. Our members model in a variety of scales.

So come and join us. We meet on Tuesday evenings and additionally at other times. You can learn skills and share common interests. We also organise a well-respected exhibition in Ely each May. Our recent exhibition was at the City of Ely Community College.

Anyone over 18 interested in joining can visit us a couple of times to see if they like it. Then Membership is £10/month. In the first instance, please contact the Club Secretary on 01480 454857 or via email: crofters@ntlworld.com to arrange a visit, or make contact via our website: www.elymrc.org.uk



Cambridgeshire Fire and Rescue Service: Think Twice Before Jumping into Water this Summer



CAMBRIDGESHIRE
FIRE & RESCUE SERVICE
pressoffice@cambsfire.gov.uk
www.cambsfire.gov.uk

PREVENTING PROTECTING RESPONDING

Would you jump into a river, lake or any other open waterway on a hot sunny day? Do you know what hazards lie beneath the water? Or how cold the water is?

Your fire service has pledged to deliver water safety education to every school in Cambridgeshire following the tragic death of a teenage boy last summer.

But there is only so much we can do and we're calling on parents, carers and peers to talk each other about water safety.

Some things to remember:

- You do not know what hazards lie beneath the surface of rivers, lakes, canals, etc.
- Strong undercurrents can be tough to conquer, even if you know how to swim
- Cambridgeshire's waterways are cold – even on the hottest days of the year – and this has a dramatic effect on your body's ability to swim and get yourself out of trouble, should you get stuck.
- If someone is in trouble, call 999 immediately. Do not hesitate to call the emergency services and give clear details of your location.

And make sure fire safety still stays at the forefront of your mind – and don't forget to test your smoke alarm.

For the latest news, incidents and safety advice, or to contact us, log on to www.cambsfire.gov.uk. Find us on Twitter, Instagram and Facebook. Call 01480 444500 for enquiries.

Safeguarding Adults Newsletter Spring 2015

Cambridgeshire's Safeguarding Adults Board have published the latest issue of their Safeguarding Adults and Mental Capacity Act Newsletter which can be downloaded from the County Council website. It includes useful information and updates for people who use services, families and carers, the general public, and professionals who work with adults.

To download the newsletter go to:
www.cambridgeshire.gov.uk/safeguardingmca and follow the link to 'Newsletters, fact sheets and resources'.

Cambridgeshire Community Fair



The first-ever Cambridgeshire Community Fair will be taking place on Tuesday 2 June 2015 at the Burgess Hall in St Ives.

The Community Fair is being organised by local rural development charity, Cambridgeshire ACRE and aims to help communities think about how they can fund, build and do more in their own villages and towns.

The event is being run as a drop-in style event from 3pm – 9pm, in the hope that as many people as possible will be able to attend for at least part of the event. It's completely free of charge to attend and no booking is required – just turn up on the day.

Attendees will have the opportunity to join a wide range of talks and workshops by local experts, covering topics like funding for community projects, building and maintaining community assets, running social action projects and developing social enterprises like community shops and pubs.

There'll be a marketplace of stalls from voluntary and community sector organisations, funders, local authorities and other local programmes, projects and groups. Stallholders will set out what they can do to help communities and will be very willing to help people with ideas to explore.

The event is aimed any anyone who lives or works in Cambridgeshire who wants to get more involved in community life. You might already be involved via your parish council or volunteer locally or you might just be wishing you could get more involved but don't know where to start.

With just weeks to go before the big day, Cambridgeshire ACRE's Chief Executive, Kirsten Bennett said: "The Cambridgeshire Community Fair is the perfect opportunity to discover what you could do in your community, get help with how to do it and to talk to others who have run similar things before to learn from their successes and mistakes."

People can find more information about the event, including the programme of speakers and a list of which organisations will be exhibiting in the marketplace by visiting the event website at: www.cambscommunityfair.wordpress.com.

Further information is available from: Alison Brown, Head of Business Services on telephone: 01353 865029 or e-mail: alison.brown@cambsacre.org.uk.

Events Team



The team consists of Jo Mules, Me, Hannah Baldwin, Claire Halpin-McDonald and Karen Carpenter

In June we had planned a “Midsummer Madness” event, as you will see mentioned in the calendar. However, upon reflection, we felt that the date was a little soon after Reach Fair and therefore it has been cancelled.

Kids – don’t forget Fathers’ Day on Sunday 21st June!

The big event in July is Maisie Whitehead’s Commemoration which takes place on Sunday the 5th. Maisie did a huge amount of work for the village during her lifetime and I took the opportunity to meet with her during my time as Clerk. She was a delightful lady and her legacy is – and will be used to renovate the church building and extend its facilities.

The event will start with Evensong followed by afternoon tea and we will all have chance to view the plans in place for our church.

And finally, don’t forget to keep taking those photos for our **Reach Calendar 2016**.

Your photos should be in landscape format – width 19.2cm and height 12.8cm giving an aspect ratio of 1.5. We’ll be asking you to send them to us later on in the year, probably in readiness for our October meeting.

David Parr

744081 or reacheventsteam@btinternet.com

St Cyriac’s Church, Swaffham Prior

in association with
The Churches Conservation Trust

Sunday 21st June
2.30 – 3.00pm

Anglesey Gospel Choir

In support of the Church and the Trust

Heritage Street Lighting Update

It would be nice to be able to report on rapid progress with this project - but sadly that is not the case. Balfour Beatty are busy putting a “template” together which can be used for our situation in Reach but also in others parts of the county where communities are wishing to make changes to the overall plan, but the process is remarkable time-consuming.

Further work has gone on in specifying what we wish to ultimately purchase – and one problem has cropped up with our existing Heritage lights. When acquired around 2000, the “medium” lantern size was chosen from a company called Urbis who have subsequently discontinued these. So we are going to struggle to upgrade the current ones to match the new, white LED lights that we have planned. Solutions to the problem are being sought.

Pleasingly, as I mentioned in the last issue, a further £5,000 has been donated by the Simon Gibson Trust (many thanks George and Catherine) and now there is an overall potential fund of some £11,650 – which is excellent.

On the positive side, I have no reason to believe that ultimately we will not be successful in bringing this project to fruition - you will be kept informed of progress as it is made.

David Parr



Amenity Fund

If you feel you have a worthwhile project that could be funded via the Amenity Fund, please get in touch with Committee Member Andrew Towers 01638 742484. To learn more about the fund please visit the village website at: www.reach-village.co.uk/amenity_fund.html.



Cambridge Open Studios: Paul Edwards

Wicken Flower and Produce Show

Saturday 18th July 2015



Wicken Fete

Saturday 27th June 2015

11am – 4pm

Crafts, Collectables, Food, Plants,
Jewellery, Toys, Books and more

Entertainment and Music

Hot Dogs and Burgers

Morning Coffees and Afternoon Teas
in the church



Lode with Longmeadow Village Fete 2015

Starting at Midday on Sunday 14th June,
this year it is a Caribbean theme. We have the
Sawston Steel Band to entertain us and
Caribbean food stall and delights.

The Inter Village Challenge is back and the cup will
be contested between Lode, Bottisham, Quy and
Swaffham Bulbeck. There will be limbo dancing as
part of the children's games and
Lumbo dancing for adults with back problems!!

The Dog Show this year is bigger and better so bring
your Bonzo along to compete in the many sections.

Raffles, teas, cake, draws, children's sideshows and
other stalls make up for a great family day on the
Fassage at Lode. The bar will be run again by
The Black Horse from Swaffham Bulbeck.

Look forward to seeing you all there!

Swaffham Prior

The afternoon of Saturday 20th June

Village Feast

Children's Fancy Dress Parade, Village
Treasure Hunt, Wet Sponges and Water
Balloons, Bowling Games and lots more.
Concluding with Egg Throwing Championship
Food, cream teas, ice creams.

One Swallow.....

...does not a summer make.

As the saying goes, apparently. Though I only heard this for the first time a week ago! So then it's probably a good thing that for the last two weeks there have been two swallows regularly resting on the telephone wires outside our house. By August there could be 30 or more, most of which will be this year's juveniles.



Barn Swallow

Related to martins but surprisingly not to swifts, the swallows we know are officially called Barn Swallows and are one of around 80 species found worldwide. Their bodies are adapted to hunting insects on the wing - with a slender, streamlined body and long pointed wings, for manoeuvrability and endurance.

Our Barn Swallows are lovely with their rufous faces and gloss blue backs, but there are some rather more vividly coloured ones. The Lesser Striped Swallow in Africa has a black and white striped chest and a bright red head. The Violet-Green Swallow of Central and North America has a dark green head and back. There is also a supposedly Golden Swallow that lives on just a single Caribbean island.



Lesser striped swallow

Their post-breeding communal roosts in reed beds around Europe can reach thousands in number, but their overwinter roosting flocks in central and southern Africa can be huge - one found in Nigeria had an estimated 1.5 million birds! This epic migration route was discovered in 1912 when a bird that had been ringed in Staffordshire was later found in South Africa.

Alison Lewis

St Cyriac's Church, Swaffham Prior

in association with
The Churches Conservation Trust

Saturday 20th June

6.00 – 7.00pm

Doors open 5.30pm

CONCERT:

ECHOES FROM THE WESTERN FRONT

Featuring music by Ravel, Messiaen,
Poulenc and others

Ian de Massini (pianist) and
Jennifer Bastable (vocalist)

£5 per ticket at the door
Refreshments available

In support of the Church and the Trust

Prickwillow Drainage Museum

CB7 4UN

Sunday 21st June 2015

11am - 4.30pm

Classic and Vintage Cars

Adults £5, Concessions £4, children £2
Family £10 (under 6 free)

Wildlife in the Garden

The Botanic Garden is a habitat that has been actively managed for wildlife for over a century, making us a great place in the City for spotting wildlife - from snakes to sparrow hawks, bats to butterflies. Our wildlife-friendly approach also ensures that the Garden has an army of birds, insects and amphibians to help control pests and diseases. Key to this is cultivating a great variety of habitats within our 40-acre site.

The tree collection includes many veteran specimens, some of which support their own whole ecosystem from fungi, through to predators at the top of the food chain; the long meadow areas support a great variety of insect life, dance all summer with moths and butterflies and provide cover for young fledglings; the log piles support beetles and other insects, grass snakes, newts, toads and frogs.



Southern Hawker

This month, we will be attempting a 24 hour audit of the Garden's wildlife resident or passing through, as the Museum of Zoology brings its annual Bioblitz to the Garden. Beginning at 5pm on Friday 12 June, we invite you to become citizen scientists for the 24-hour period and join forces with the experts to locate, identify and log the wildlife of the Botanic Garden!



Comma on Verbena bonariensis by Ed Lloyd Jenkins

Wildlife lovers young and old can pre-book to join one of the many free, expert led surveys and forays including twilight bat walks using ultrasound detectors, midnight moth-trapping, bee identification workshops and early bird walks. Drop-in activities are available throughout the Bioblitz Saturday: meet the experts from conservation partners across the region, help identify moths, butterflies, dragonflies, aquatic animals, small mammals, grass snakes and amphibia, birds, plants and slugs and snails (hopefully not on the plants!). Have a go at owl pellet dissection and try putting the skeleton prey back together, discover the best habitats for mini-beasts, go spider spotting, pond-dipping, and join one of the wildflower walks.

You don't need to be an expert to take part, and the more eyes and ears we have surveying the better, so just come along and join in to discover the wildlife on your doorstep. Bioblitz runs from 5pm on Friday 12 June – 5pm on Saturday 13 June. Admission to the Garden will be free for those who have pre-booked onto a walk or workshop during the 24-hour Bioblitz. Normal Garden admission applies otherwise.

To book onto Bioblitz please visit:
<http://museum.zoo.cam.ac.uk/events/bioblitz.cambridge.2015>
and for further details on the Botanic Garden please visit www.botanic.cam.ac.uk.

The Botanic Garden is open April – September 10–6. Admission charges to the Botanic Garden are as follows: Adult: £5.00, adult Gift aid £5.50. Concession: £4.50, Gift aid concession £4.95. Please visit the website for details at www.botanic.cam.ac.uk

Juliet Day

Swaffham Prior Village Gardeners

Calling all Reach gardeners. Would you like to join our friendly group in Swaffham Prior? You would be very welcome.

Tuesday 9 June

Evening visit to Upwater Lodge, Cambridge

Sunday 28 June

Coach Outing to Helmingham Hall Gardens

Tuesday 14 July

Evening visit to Netherhall Manor, Soham

Indoor meetings at 8pm in Swaffham Prior Village Hall.

Membership £15 per person. New members and Visitors always welcome - £3 per evening.

Chairman/Treasurer: Peter Hart 01638 741681

Joint Secretaries: Margaret Joyce and Mary Hart
01638 744390 / 741681



Out and About

As I write this local update, it is warm and windy mid-May, the long, drowsy summer months lie ahead and winter chills are almost forgotten.



Throughout the village, trees and bushes are filmed in fresh foliage, hedgerows froth with blossom, verges stand knee deep in creamy cow parsley. Yoke yellow cowslips break the swathes of green and provide a welcome nectar source for bees and butterflies.

Recently returned from Africa, the cuckoos' double note echoes across fields and the first avian travellers from distant lands have arrived.



Little Grebe

Swooping swallows and shrieking swifts make their welcome return, the more indistinct chiffchaffs and warblers are also here, rustling leaves and singing their plaintive notes. Black caps, white throats, yellowhammer and goldfinch enliven hedgerows, black headed gulls and corvids populate fields.

These green and sunny days are also a time for butterflies, vivid wings flutter across grasses, garden and verge-side flowers, the early whites and yellows are visible together with the orange tip and small tortoiseshell. Patches of common nettles accommodate mid-May munching caterpillars, the red admiral and peacock.

On the village margins the skylark's continuous and constant song can be heard overhead, no other British bird maintains a 'song flight' to this extent. Only just visible against the sky, this brown and streaky small bird is perfectly camouflaged in field ground.

Hares lope across open country. Females can become pregnant as early as February and produce 3 - 4 litters, of three or more leverets, until September. At birth the female leaves her young but returns after sunset to suckle them for a few minutes. One visit per day is all the youngsters get from birth until they are fully weaned.

The muntjac's rasping bark can be heard throughout the day, roe deer stand in fields along the Burwell Road and on Tubney, their coats changing from winter grey to fox red.

Everywhere the cycle of breeding is in full swing.



Red Kite

Sightings

Hilary texted that, on 5 April, a lesser spotted woodpecker perched on her stable yard gate. She also noted the arrival of the first returning swallow on 9 April. A day later Ron saw one drinking from a puddle outside the Batemans' house, early arrivals this year, he usually expects them on 15 April. A couple of days later Tracy noted their return to Springhall Farm, this the 15th consecutive year. She continues to enjoy frequent sightings of barn owls; and goldfinch, jays and reed bunting remain daily visitors to her feed station.

Ron saw two blackcaps on 13 April, heard a cuckoo on 26 April and, early in the evening on 1 May, a Reeves cock pheasant flew past their garden. I note that one of these beautiful gold laced creatures is also present at Lords Ground Farm.

Hilary spotted bats above her muckheap on 20 April. We've see them flitting mid evenings at the bottom of the field track catching thousands of insects each night. Pennysaw their first pipistrelle on 10 May.

My most unexpected village sighting this month was that of a red kite. This flew up and over Graham Reeves' hedge, across the road then looped back towards the Robinson's farm. Seen at such close proximity the chestnut/red plumage and deeply forked tail were unmistakable.



Grass Snake

From the field near Reach Wood we see, on an almost daily basis, kestrels, green woodpeckers and up to four buzzards circling overhead. The night sounds of owls, deer and the wild shriek of lapwing invariably accompany the ponies' evening feed.

A short walk on nearby Tubney Fen continues to offer a wealth of wildlife sightings, this week I saw: a grass snake, tadpoles, herons, marsh harrier, little grebe, Canada and greylag geese, moorhens, coot, skylarks, roe deer and mallard. Not bad for a 40 minute amble with the dog!

Local horse lovers:

Mark Harvey, a professional animal photographer produces stunning images with a 'fine art' twist. Somehow he captures the essence of the subject in a dramatic, unique and exciting way. As Thistle reaches her 26th year I've taken the decision to book him for a session before she loses her extreme good looks!

I wonder if anybody in the village might be interested in joining me in this venture? I don't imagine it will discount his rate (£270 for the day including photograph) but will probably make his trip from Leicestershire more worthwhile.
Website details: www.mark-harvey.com

Joss Goodchild

St Mary's Church, Burwell
Concert and BBQ for a Summer Evening
A perfect way to relax at the end of a busy week

Friday 17th July 2015

Concert 6.30pm
Followed by BBQ from 7.30pm

Music by
Stour Winds

A double wind decet playing a programme that will include music from E Bernard, J Haydn and J Reicha

Tickets £5 (Under 16's £2.50)
including BBQ on sale at CentrePeace, Tina's and the Post Office or email administrator@stmarysburwell.org.uk

Wine and soft drinks available.



SWAFFHAM BULBECK
SUMMER THEATRE
proudly presents

'THE GONDOLIERS'

by Gilbert and Sullivan

Wednesday 10th – Saturday 13th June 2015
Evening performances at 7.30pm and
a Saturday matinée at 2.30pm
Doors open 45 minutes before
each performance

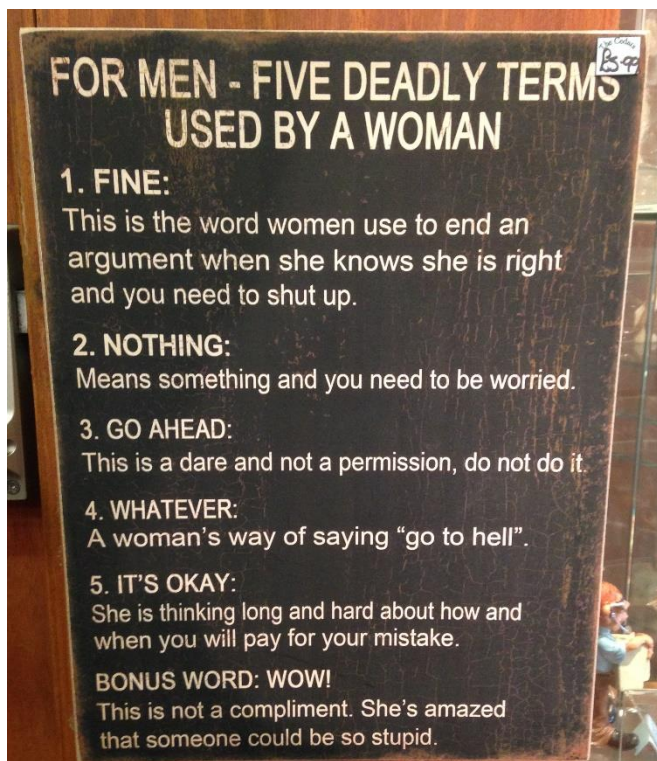
Downing Farm, Station Road,
Swaffham Bulbeck, Cambridge
CB25 0NW

Ticket prices Wednesday and Thursday £9,
Friday and Saturday £10, matinée £6,
via our website www.sbsummertheatre.com
or from Caille Peri 07541 554845; e-mail
sbst.tickets@gmail.com

*On-site parking; facilities for wheelchair users;
licensed bar*

For further information contact Ruth Dennis
on 01638 508171 or
info@sbsummertheatre.com

Spotted in a Cotswolds shop . . .



Tales from a Reach Garden

April was sunny, warm and dry, which ordinarily would be a joy for working in the garden, but the midges, and other biting insects were out in force this year, making gardening a very itchy experience. The martins, swifts and swallows haven't reached our garden yet to help clear the air. Maybe they have more than enough to eat in other parts of the village as I have seen them swooping over the village green. Blackfly aphids have been out in huge numbers too and pounced on our redcurrant and blackcurrant bushes in April.



There were some ladybirds around, but they must have been overwhelmed by the number of aphids, so I helped them by squishing the blackfly on the stems where I could. This was a very messy business so I wore rubber gloves sprayed with an organic insecticide (basically a soap solution) for this. Any aphids which survived the squishing would be in good contact with the soap solution, which partially works by dissolving the outer waxy cuticle on their bodies, causing them to dehydrate; the ladybirds, (which are unaffected by the soap) could then deal with the stragglers. Since then the fruit bushes have been clear of blackfly, although they are currently affected by blister aphid which on redcurrant bushes causes the youngest leaves to form red cockling, looking like they've been scalded. The blister aphids are easy to deal with – I just prune the affected leaves off the bush.



Blister leaf on redcurrants in May

Redcurrants aren't as popular in the UK as in the rest of Europe where they are eaten fresh and in fruit salads. Relatives of redcurrants, such as gooseberries and blackcurrants are more popular here. We have two redcurrant bushes growing in our garden, one is "Jonkheer van Tets" and the other is "Red Lake"; the former starts ripening a couple of weeks before the latter. I find redcurrants easier to pick than our blackcurrants because they produce longer 'strigs' of berries which I pick when most of the berries have ripened red. The berries make a pleasant, if astringent, addition to summer puddings and I've made a type of red fruit blancmange (a rougemange?) using a blend of juices from redcurrants and raspberries in place of milk, which is delicious. And, of course, there's redcurrant jelly, a well-known accompaniment to red meats like roast lamb.

If you do want to grow redcurrants and even eat the berries, they do need protection from birds, who unlike the average Brit, actually find redcurrants irresistible. We have grown our redcurrant bushes inside a fruit cage since we moved here and inadvertently and in spite of our efforts, we shared our crop of redcurrants in the first year with some very determined blackbirds which had spotted the ripening redcurrants.



Strigs of redcurrants ripening in June

I remember going into the fruit cage one morning to do some watering, checking the redcurrants which were ripening but sticky for some reason - some even appeared to have been nibbled - when I saw a blackbird gorging itself on ripe fruit. I don't know who was more shocked, me or the blackbird! I thought maybe I'd left the cage door slightly ajar, although I was sure I had to open it before entering and we had netted over the gap between the top of the door and the cage frame. Next day, a blackbird was there again, almost oblivious to my presence in the fruit cage, flitting from twig to twig, happily chomping the choicest redcurrants off each strig, then it spotted me and seemed to dive through the side netting to get out, which left me wondering how it did that. I spotted a hole at the base of the netting, which I tried to patch up...only to find two blackbirds in the fruit cage among the redcurrants again the following day... This time I checked the side netting of the fruit cage more carefully and noticed that the plastic netting had been neatly snipped along the base of the cage. The plastic netting which had been supplied with the fruit cage framework was not fit for purpose... So we rolled out some narrow gauge chicken wire along the base of the fruit cage to cover up the gaps. I figured that plastic was easier for a bird to snip through than metal wire, and blackbirds may find standing on wobbly wire while snipping through plastic more difficult than when standing on terra firma.



The fruit cage aka "Fruit Knox"

Meanwhile Richard grumbled that these fruit were probably the most expensive he'd ever tasted, if we managed to eat any and maybe we would need concrete next, like Fort Knox. However, the chicken wire did do the trick, there were no more blackbird incursions and we were able to harvest our redcurrants, which thanks to the blackbirds were very sticky and had to be picked berry by berry that year.

There have been no further blackbird invasions in the fruit cage since then. We grow our redcurrants, blackcurrants, raspberries and blueberries in there and pick fruit from June to November. I feed the fruit bushes with some general fertilizer forked in around the base of the plants in spring then water in a tomato fertilizer as the flowers develop and the fruits ripen.

The raspberries often show some yellowing of the leaves while fruiting (known as chlorosis) which is due to magnesium deficiency so I water in some Epsom salts around the roots and as a foliar feed in the evenings. If the raspberry leaves are left to yellow while they are fruiting, they'll wither and any fruit that's formed are tiny and sour. I did wonder when we first built the fruit cage whether bees would be able to get in to pollinate the flowers, but most find a way of weaving themselves in through the netting, and I'm often picking berries in there while the bees are busy.

Danuta Gibson

**BOTTISHAM & DISTRICT
GARDENING CLUB**
An RHS Affiliated Society

ANNUAL SHOW 2015

This year's Annual Show will take place in the
Royal British Legion
on Saturday 12th September 2015

Categories include Fruit and Vegetables;
Flowers; Baking and Preserves; Crafts;
Painting and Drawing; Photography;
and Children (age groups)

Something for everyone – give it a go!

www.bottishamgardeningclub.co.uk



LODE VILLAGE OPEN GARDENS SUNDAY 28TH JUNE

11.00am – 5.00pm
12 Village Gardens to visit



**Music & Art
Display in the
Church,
Plant Stalls,
Children's
Activities,
Teddy Treasure
Trail,
Tea and
Homemade
Cakes**

Adults £6
Accompanied children free
(No Dogs)

Free Parking available

**Proceeds to village church
& Lode – Quy cycle path**



What's Growing on at Snakehall Farm

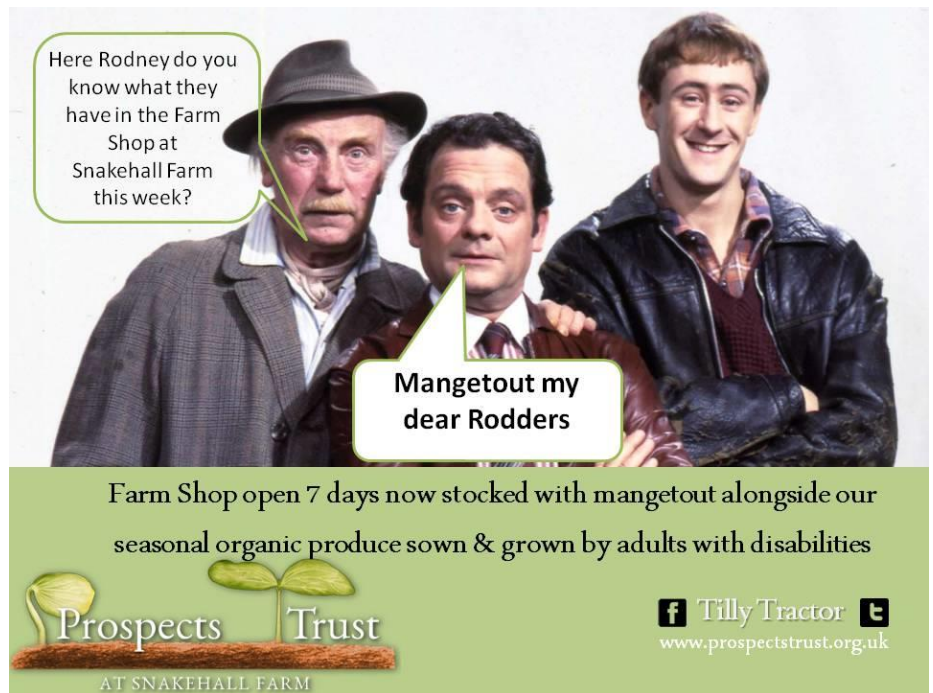
READY STEADY COOK.....WELL SOON

As you read this article our fully accessible, super shiny new kitchen is being fitted in the Tea Barn. Please befriend Tilly Tractor on Facebook to watch our new kitchen grow on Snakehall Farm. We are still looking for recipes for seasonal preserves so that our Co-worker's will be Ready Steady Cooking in September 2015. Do you have the perfect family recipe, tried and tested by generations that you can share with our team of budding Nigellas, Jamies and Gordons?

Have you noticed the deep freezer in the farm shop? Once our new kitchen is commissioned we will be stocking this with freshly chopped and rapidly frozen Prospects produce, so you will be able to enjoy our seasonal bests all year around.

SUMMER IS IN THE SHOP READY FOR YOUR FAMILY FEASTS

We have started to stock the very best of beans, the Mangetout have hit our shelves alongside all our other seasonal favourites. Keep your eyes peeled as you drive past Snakehall Farm, our lovely new caxtons will be advertising new stock in the shop, especially the much awaited new potatoes.



Here Rodney do you know what they have in the Farm Shop at Snakehall Farm this week?

Mangetout my dear Rodders

Farm Shop open 7 days now stocked with mangetout alongside our seasonal organic produce sown & grown by adults with disabilities

Prospects Trust
AT SNAKEHALL FARM

Tilly Tractor
www.prospects-trust.org.uk



Our Farm Team, spearheaded by our Farm Support Worker Jen, have expanded the flower project. After a tiny budget to buy a few seeds last year, Jen and a team of Co-workers started a new cut flower project, it was a blooming success. Our aim is to only grow traditional varieties that capture the best colours and fragrances of the season. Our spring time Tulips and Daffodils have given way to the sweetest smelling Sweet Peas. Our bunches have been freshly cut and hand tied by our Co-workers who have really enjoyed the therapeutic benefits of this new venture. Pick up a small posy and bring Snakehall Farm into your kitchen and lounge. One recent customer fed back "I have never seen such huge tulips. Whenever I buy tulips from the supermarket they wilt within a few hours. The Prospects Trust tulips actually grew bigger in the vase, I was truly amazed and shall be back for more".

REACH FAIR 2015 - #TillySelfie

Thank you to all who came and supported our stall again this year at Reach Fair, yet another beautiful day of sunshine. It was great to meet new and old customers on the stall and we are certain we have created the next generation of budding farmers, as children took to the wheel of Tilly Tractor too. We encouraged a few to take #tillytractor selfies to help promote the work of the Prospects Trust. We hope you grabbed your tomato plants and herbs at the fair but if not don't worry we still have a few left on display outside of the shop.



GIVE & GAIN BACK AGAIN

To celebrate the national Give and Gain campaign, Snakehall Farm hosted another team from Black Horse Finance swapping their day jobs for a challenging day of construction on the farm. The team made their third annual visit, this year tackling our essential but rather dilapidated compost area. The team worked tirelessly all day and have made a huge impact. They also raised much needed funds to support their efforts from Car Dealerships across the Anglian region.



We hope to welcome the team back again next year and of course we are always open to other volunteering groups or individuals wishing to take on a Prospect challenge. Give the farm a call for more details 01638 741 551.

Marianne (Maz) Baker
01638 741551

Fruits from our Orchard: Discovery and Egremont Russet

Discovery

Discovery is one of the most popular English early apples. It is grown commercially on a small scale in the UK, because unlike almost all other early apple varieties it has a reasonable shelf-life. It is quite widely available in the UK in late August and early September.



The flavour is acidic rather than sweet and can have a hint of strawberry flavour, although this is very variable. The colours are a fresh yellow-green, usually with dark red patches where the sun has caught it. An interesting characteristic of Discovery is that the red skin colour can occasionally bleed slightly into the flesh.



Discovery is a very important apple for commercial growers and supermarkets in the UK because it allows them to start marketing the new English apple season and get consumers primed to buy English apples again.

Discovery is often thought of as an old variety, but was found in the late 1940s by a fruit farm worker in Langham, Essex, who planted some pips of Worcester Pearmain in his garden. Discovery is therefore a seedling of Worcester Pearmain, a 19th century early-season apple variety which lends its attractive red finish. Worcester Pearmain is probably the source of the strawberry flavour, which is also found in some of its other offspring including *Katy*, which is similar in appearance to Discovery but has a bit more depth of flavour and arrives slightly later in the season. *Scrumptious*, a modern early variety, is also closely related.

We have two Discovery trees in the 24 Acres orchard – neither of which are currently sponsored!

Egremont Russet

Egremont Russet is a classic English russet apple from the Victorian era (introduced in 1872, possibly developed by the estate of Lord Petworth in Sussex. Its parentage is unknown). Whilst russet apples have generally fallen out of favour, Egremont Russet remains popular with discerning apple lovers who appreciate its unique flavour and appearance.

Part of its enduring success is down to niche marketing. This is an apple that dares to be different! It is a russet-skinned variety with a dry flesh - a style of apple that has not attracted the attentions of mainstream apple breeders, but nevertheless seems to have a dedicated following. Also, in spite of its unique appearance, Egremont Russet has many of the characteristics which mark out a good apple: a harmony of flavour and texture and a good balance between sweetness and sharpness.

The difference is evident as soon as you pick it up. The skin is entirely covered with "russet", which feels like very fine sandpaper. Some other varieties have streaks of russet, notably Cox's Orange Pippin, but in Egremont Russet it completely dominates the appearance. The colour is an attractive dull gold flecked with yellow.



Egremont Russet is a medium-sized apple. The flesh seems quite dry and gets drier with keeping - it is moist rather than juicy. Traditionally described as "nutty", the flavour is more delicate than most varieties, and quite sweet. Yet Egremont Russet is surprisingly versatile, working well in savoury salads for example and a popular partner for cheese.

If you are used to a modern, smooth-skinned, crisp apple then the sandpaper finish of a russet apple like Egremont Russet may sound distinctly unappealing, but this is a case of the whole being greater than the sum of the parts. It may be very different, but it undoubtedly works - definitely worth a try!

We have two Egremont Russet trees in the 24 Acres orchard, one sponsored by Bob Proctor, and the other by Hazel Lingley.

All descriptions courtesy of Orange Pippin:
<http://www.orangepippin.com/>

David Thomas

Wicken Fen and Anglesey Abbey News

The Fen is a hive of activity as nature gets on with the important job of raising the next generation. Cuckoos are calling from the tree tops, chattering warblers can be heard all over the fen and seven Konik foals are enjoying the warm spring sunshine. As I type we have just received confirmation that Chris Packham and the Spring Watch cameras will be at Wicken in the next few days filming our cuckoos for the forthcoming series.



The Konik pony sponsorship scheme which we launched last month has proved very popular. For £25 per year, sponsors receive an information booklet on the Koniks, a sponsorship certificate, three newsletters a year, the chance to enter 'name the foal' competitions, and the opportunity to meet the Koniks on guided walks led by our experienced Rangers or volunteers. All the funds raised from the scheme will go towards looking after the herd, which currently costs around £5,000 per annum, most of which is spent on vets fees.

To find out more or to join the sponsorship scheme, please call into the Visitor Centre or email: wicken.koniks@nationaltrust.org.uk



Work is expected to start in late July on construction of a new bridge over Harrison's Drove linking Baker's Fen with Harrison's Farm. The bridge will enable our herds of Koniks, Highland cattle and wildlife such as deer, to move freely between the two areas, an essential feature of our extensive grazing programme. Our ambition in the longer term is to link Adventurers' Fen and Burwell Fen via a new crossing over Burwell Lode, which will also form part of the Lodes Way. The bridge over Harrison's Drove will be a wooden construction with clearance of 3.7 metres (required as the Drove is designated as a highway). Access to the drove will remain open at all times and banksmen will ensure safe access for all users when contractors are at work. Unfortunately the car park at the end of Factory Road will be closed during construction to house the contractor's compound. Whilst construction is taking place, we will also be installing a new elevated wildlife hide which will provide magnificent views across Baker's Fen.

Unfortunately, there have been numerous incidences of anti-social activity on Burwell Fen in recent months. Starting with the rave in November, there has been vandalism to fences and gateways, reports of motorcyclists riding over the Fen and reports of people illegally hunting with dogs with five deer carcasses discovered. The local Crime Reduction Officer has advised that people should dial 999 if they see an illegal activity taking place, or contact Cambridgeshire Police using the 101 number to report an event that has taken place. Please also report any incidents to the Visitor Centre on 01353 720274.



If you're feeling creative we have Rush Weaving Workshop on Saturday 6 June, 10am – 4pm, where you can learn how to make rush mats and baskets under the expert guidance of local weaver, Nadine Anderson. Tickets £60 are available from the Visitor Centre on 01353 720274. It's hard to believe but the school summer holidays will soon be upon us – details of all our events over the summer can be found on our website at www.nationaltrust.org.uk/wicken-fen.

Down at Anglesey Abbey we are holding a LiberTeas event on Sunday the 14 June at 1.30pm to mark the 800th anniversary of the sealing of the Magna Carta by King John at Runnymede. The event will include a talk by our Regional Director, Ben Cowell, who is a Magna Carta expert, followed by Q&As and a delicious cream tea. Tickets £8.50 are available from the Visitor Centre on 01223 810086. There is a strong link between the Fairhaven family and Runnymede, as the land where the Treaty was sealed was donated by the Fairhaven's to the National Trust in 1931.

This year we are holding a new event 'Roses, Racing and Royalty' from 1 June - 19 July. At this time of year Lord Fairhaven's diary was very much focused on flat racing at Newmarket, plus entertaining his racing guests including the Queen Mother. Throughout the festival there will be displays in the Rose Garden and House, both factual and floral to celebrate these important features of his life.



Finally, if you fancy a quick break without having to travel too far, why not head over to our campsite at Houghton Mill on the banks of the River Ouse. The site caters for caravans, motorhomes and tents and is open until 2 November. Further information/bookings can be made online at www.nationaltrust.org.uk/houghton-mill or by calling 01480 466716.

Howard Cooper
Wicken Fen and Anglesey Abbey



Well done once again to Joyce Harrison of Great Lane. All correct

Thanks to Puzzleric alias Richard Maddox

SOLUTION TO CROSSWORD No. 30

ACROSS: 1. RELIABLE. 5 OBEYED. 9. GUM. 10. LASTING. 13. WEB. 14. EYED. 16. USES. 18. GODS. 20. SEEMS. 23. FADE. 25 ENTERED. 26. SPECIAL. 27. FRED. 28. BRICK. 31. INKS. 33. TYRE. 35. LIES. 38. ETA. 39. ADMIRED. 40. PUT. 41. SPEAKS. 42. EXPECTED.

DOWN: 1. RAGING. 2. LAME. 3. AXLE. 4. ENTIRE. 6. BUGS. 7. YAWS. 8. DEBATE. 11. ADDS. 12. NUTS. 15. YESTERDAY. 17. EFFECTIVE. 19. OWNER. 21. ELDER. 22. MUSIC. 24. DRANK. 27. FILLETS. 28. BLED. 29. INVITE. 30. KALE. 32. SKATED. 33. TAKE. 34. RANK. 36. IDLE. 37. SPAT



MIDSUMMER MARKET

Support St Cyriac's Church while you celebrate the Solstice in Swaffham Prior

Saturday and Sunday
20th and 21st June
11am - 5pm

Bric-a-Brac, Furniture,
Crafts, Toys, Plants,
Local Produce
Tea and Cakes



Cambridge Open Studios: Lotte Attwood

Days Gone By

The 1980 hit movie Fame catapulted Irene Cara to stardom. Originally cast as a dancer, screenwriter Christopher Gore re-wrote the role of Coco Hernandez when he heard her voice. As Coco Hernandez, she sang both the title song "Fame" which topped the UK charts for weeks in June/July 1982 and the film's other single, "Out Here on My Own."



In the Falklands, 48 British servicemen died in an Argentine air attack on two supply ships. Sir Galahad and Sir Tristram were anchored off Fitzroy in Port Pleasant, near Bluff Cove, when they were bombed in a surprise raid by five Argentine Skyhawks. Sir Galahad burst into flames instantly. The ships had almost completed an operation to move support troops of the Fifth infantry brigade from San Carlos to join forces advancing on the capital Port Stanley when the attack occurred.



The attack came before adequate air defences could be installed and the men on board, many from the Welsh Guards (and including Simon Weston who was badly burned in the attack) were helpless as Argentine air planes pounded them.

In a week of raids at San Carlos, not a single ship has been sunk. Now, two had been lost in a single attack which cost the lives of one fifth of all British lives lost in the war. It subsequently was reported that landing craft problems had delayed the disembarkation of troops by some 7 hours – it appears that this was a disaster that should have been avoided.

Hostilities officially ceased on 20 June 1982. The war cost the lives of 655 Argentine and 255 British servicemen. The victory greatly boosted the popularity of Margaret Thatcher's government which went on to win the next election.

Argentine president General Leopoldo Galtieri was deposed and served three years in prison for military incompetence.



Things were a lot quieter in Reach!

The current Clerk, Margaret Evans having signalled her intention to leave some time ago, was replaced by Mrs Pauline Parkes of 21 Great Lane (where Hugh and Marie currently live).

There was also a suggestion in the Parish Council minutes that there would be a meeting to possibly create a "Village Society" in Reach – doubtless we will learn more of this in due course!

The minutes also note that John Reed "declined any charge for the 2 cherry trees given to the Parish Council". So he was a great bloke then – as he is now!

In the village magazine there was a battle of words going on between someone called "Nebi Yunis" and a Mr Balaena. All very civilised with no bad language but does anyone recollect who these two people were/are?

And finally – we had a royal birth! Diana, Princess of Wales, gave birth to a boy (William) sixteen hours after checking in to St Mary's Hospital, in London.



David Parr

Meeting Sue Briscoe

My full name is Susan Briscoe and I was born in the Whittington Hospital, London. I was brought up in Highgate, London and my primary school, Gospel Oak School, still exists. I remember that there was a railwayline which passed over the top of the school playground and American troops, travelling to the military bases in East Anglia, used to throw coins down into the playground. I have a twin sister, Margaret. She passed the 11+ and I didn't so after that we went our separate ways to different schools.



With my twin sister Margaret, aged 4 years at Shepperton, near Elstree Studios

I especially loved having a twin sister when I was young; it was lovely, very nice. We used to play games on people and swop our names badges around. We were identical and couldn't be told apart. Even we can't always tell who is who in old photographs.



Aged 14

I was naughty and sporty at school. I loved tennis and gymnastics. John, my husband, went to the school next to ours and we went out together first when we were at school aged c. 14 years.

I started nursing when I was 18 at the Middlesex Hospital, London and was there for three years. I was a State Enrolled Nurse and left to marry and have children. I first went solo in a glider at 19 years old. It was my chief hobby and I travelled from the nursing accommodation to the gliding club.

We moved out of London to Tring and bought a house for £4,400! I have three children, Philip, Peter and Helen. I was very active: I was a member of the Tring Choral Society. I started up a nursery school which my own children attended. I did lots of fundraising including sponsored walks with the children (the children were fine and could walk up to 16km! It was the adults who suffered and struggled). I did Swimathons, choral concerts and Race for Life. I started rowing and had a rowing eight for Price Waterhouse Computers.

I took part in Red Nose Day and did a 30-mile walk for Papworth Hospital – it was very gruelling and took 11 hours.

I retired in 2008 but I still keep on working because I enjoy it. I like meeting people and I've recently met interesting people while working at M&S, Cambridge.



Sitting in a spitfire - and loving it!

How did you come to live in Reach?

We were living in Burwell and wanted to downsize. We looked at a lot of properties and came here to Reach. We've been here 12 years and it has been very enjoyable. When I come home from work it's peaceful and quiet. People are very friendly and it's away from the hustle and bustle of Cambridge. Reach is very good for children and they can play on the green safely.

You're a woman of boundless energy come Fair Day. How do you do it?

I've learnt to pace myself. All the walking is probably the toughest part and about 3pm I find a straw bale to sit on. That said I very much like the day. I'm full of adrenalin and go with the flow. I thought Reach Fair was very pleasing this year especially the amount and type of stalls and of course it helped that the weather was very good.

You seem a very calm person when others might give way to stress

I've learnt through experience that it's not worth being stressed. If there's a problem I try and work things through. I work on the basis that if it happens, it happens, deal with it.



Standing next to my brother's plane

You pilot glider planes and have done for many years which is very daring of you

Yes I love gliding and enjoy the adrenalin rush. A commercial pilot once took me up in a plane and just said, tighten your lap straps tight! We did loop the loop several times, flew upside down for long periods, did stalls, spins and finished with a very scary landing. Yes, I'd say he was showing off. The problem was that he didn't forewarn me and was a member of the English team aerobatics!



Enjoying being on a cruise ship

I like cruises very much. We did go to Corfu once and stay in a hotel but that was many years ago. On cruises I like the people you meet and the places of interest you visit albeit only for one day. You see a different place each day which is very exciting. I especially like the Caribbean. The ships are lovely and I've made some wonderful friends. I like arriving at a new dock, sharing a taxi with others on the cruise and going out for the day. It may be the beach and Antigua has some especially beautiful beaches. We've seen Nelson's Dock Yard and witnessed people arriving from having rowed across the Atlantic. We were in Malta the day before 9/11 and saw HMS Invincible. We've seen Ground Zero in New York and a whole host of other places. We were kidnapped once in Hypha, Israel. We boarded a bus to go to the ship but the bus driver has been paid to take us to a diamond shop. It was scary as we passed through gates which closed behind us and we didn't know what was happening and the ship was further and further away and was about to sail.



With two 90-year olds celebrating D-Day in France

I regularly go to Cannes to celebrate the D Day Landing. It's a huge affair. We lay wreaths, spitfires fly over and there are fireworks. We base ourselves at the Pegasus Bridge. I go with my sister and her husband and enjoy a few lovely long days.

What's your favourite music, books and film?

For music it must be Sibelius II. And for authors, I like Geoffrey Archer; he's a brilliant author even if he is a naughty man. I think Wilber Smith is fantastic as well. Film-wise I like Barbara Streisand in "I Can See Forever".



With one of my grandchildren

No I cannot change a plug. I can cook and love cooking. No I do not like TV chefs. I don't want to be 'entertained' by a person cooking. I don't watch much television but if I do I like documentaries on nature, history and archaeology. I love going out to dine and particularly like Thai food and there's a very good restaurant in Saffron Walden. We also like the Angel Hotel in Bury St Edmunds.

What's your philosophy on life?

Take life as it comes!



Sue feeling secure between two handsome men in uniform at Reach Fair 2011

Sue and John will be leaving Reach shortly. We thank her for all the contributions she has made to the village, especially at Reach Fair when her boundless energy and good spirits are remarkable. We wish you both well. Ed.

Wine Tasting



The evenings always start off so well. Smiling, attentiveawake...



The Connoisseur: Rhys Baldwin



Beware distracting tactics by Lesley Boyle



Hands up who voted for UKIP? Philip Lewis!

Wine Tasting



Oh no. The lot barred from the Dykes End have been let in



It only hurts when I laugh: Hannah Baldwin

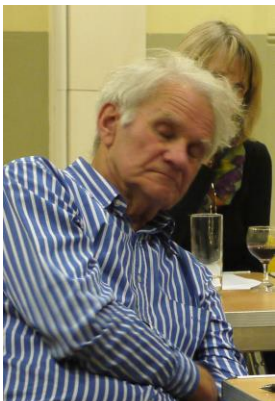


Home time is 9.30pm like it or not!



Hugh they've rumbled the £2.99 plonk from Asda

Hugh, More plonk, less chat OR more chat, less plonk!



Food Focus – Reach Boys Rise to the Challenge



Encouragingly there were several other contestants who would have taken part if I had been better organised at publicising it and setting out the criteria – so apologies to those who were unaware. The rules will be clearly set out and publicised next year!

It has been suggested that the contestants' skills should be put to the test with a different product next year, so ideas are welcomed. We could stick with cakes and choose the best Dundee or lemon drizzle or veer off with sausage rolls or pork pies (the current favourite). I favour sausage rolls purely because they sold so well at the fair and we underestimated their popularity...can you be swayed boys?

I would also like to take this opportunity to thank everyone else who baked for the fair; we had a wonderful and abundant selection of delicious cakes and goodies and lots of willing helpers on the day. Next question...who wants to run it next year?!

Forthcoming Farmers Markets & Food Festivals

Ely – 2nd & 4th Saturday of each month (June 13th & 27th (15th birthday celebrations with tasters and demonstrations), July 11th and 25th)

Burwell – 2nd Saturday of each month (June 13th, July 11th)

Catherine Gibson

Who could have predicted such enthusiasm for cake baking amongst the male population of Reach? After accidentally landing myself the job of running the Tea Tent come Cake Stall at the Fair, my mission to encourage village-wide baking took a turn down an unexpected path when I asked a gang of beer drinkers if they would be able to provide a cake for the 4th May.

The seed of the Reach Boys Bake Off was sown and six contestants "rose" to the challenge of baking a Victoria Sponge for judging on the night of the 3rd and another cake for the stall! Competition was fierce, it seems, with practice cakes baked and reputable ingredients procured (Ron Greenhill's eggs being preferable in the end to the Swaffham Prior duck eggs which were trialed) - the landlord oblivious to the black market in duck eggs while his back was turned. I was lucky enough to sample the winning cake - fantastically light and delicious (and far better than anything I have ever baked), so congratulations to Ray Bateman and we all look forward to next year's submissions.



**Ray Bateman winner of the Reach Boys Bake Off 2015.
Happy and confident in the kitchen - who will knock him off his pedestal?**

Ray Bateman's Recipe for a Winning Victoria Sponge



Ingredients for Cake

4 local free-range eggs (from Ron Greenhill)
225g/8oz caster sugar, plus a little to add to whipped cream
225g/8oz self-raising flour
2 tsp baking powder
Teaspoon of Ray's winning ingredient!
225g/8oz margarine or soft butter at room temperature

Filling

Bonne Mama Raspberry jam
400ml Whipped double cream with two tablespoons of castor sugar added

Grease and line 2 x 20cm/8in sandwich tins
Oven to 180C/350F/Gas 4.

Method

Add all cake ingredients into a large mixing bowl and mix with an electric mixer until blended. Do not over mix.
Divide the mixture evenly between the tins.
Place the tins on the middle shelf of the oven and bake for 25 minutes. The cake should be evenly brown and springy to touch.
Remove them from the oven and set aside to cool in their tins for five minutes, then carefully turn the cakes out onto a cooling rack.

Leave to cool completely.

Place both cakes upside down onto plates and spread one with plenty of jam and the other with the whipped cream.

SWAFFHAM PRIOR HERITAGE WALKS

A walk around and talk about village life in earlier times: the law, the poor, work and play

Followed by Afternoon Tea and Cake

Sunday 14th June 2015
2.00 – 4.00pm

Meet at the junction of Cage Hill the High Street and Lower End, by the Village Sign

Adult £7.50, Family ticket £24
To include refreshments

Contact Elisabeth 742974
Limited numbers,
all tickets to be booked in advance

St Mary's Little Bears
Teddy Bears Picnic
Thursday 2nd July 2015
10 - 11.30 am
£2 per family
Bring your Teddy!
The Vicarage Garden
22 Isaacson Road
01638 741262



Cambridge Open Studios: Sonia Villiers

Swaffham Prior Primary School



The Easter term came to an end with a flurry of exciting events...

Dr Shirley Hall, who works for the Ely Diocese, came to visit Neptune Class and taught them about the Stations of the Cross. The children then painted the Stations in the form of Aboriginal art. This was quite challenging as the colours and shapes used in such art are representational of moods and feelings.

Neptune Class visited Burwell House for three days and two nights and had a wonderful time. They proved to be an enthusiastic group and comments were made by the staff at Burwell House about their good behaviour and their love of food! The majority of activities were based outside and ranged from learning how to read compasses and use them to follow simple routes and locate areas on a map of the grounds, to working in teams to solve team challenges. The children created batik designs on bags and took part in the infamous 'Great Eggscape'.

The Circle Schools Spring Concert took place and was an amazing event! Eleven primary schools and Bottisham Village College performed a range of songs and other musical items, including a jazz band and an orchestra. Mrs Holt expertly conducted the joint choir and we heard renditions of 'It's a long way to Tipperary' and 'Pack up your troubles' amongst others. We also heard some poignant poetry composed and read by children from Swaffham Prior, Swaffham Bulbeck and Bottisham Village College and were entertained by some fabulous Molly dancing. Congratulations go to Swaffham Prior Choir for a successful sing and thanks go to Mrs Holt for organising the concert.



Circle Schools Concert

We have finished the term with our Easter Service at St Mary's Church led by Reverend Sue. We enjoyed performances from KS1 Choir and Mercury and Mars Classes. We then listened to a presentation of readings and songs which told the Easter story. It was thought provoking and there were some fine singing performances by Lucy, Niamh, Hattie and Verity.

We started the new term with a special themed day focused on pirates. The school was full of pirates! We all dressed up to celebrate the arrival and launch of our new Pirate Ship provided by FoSPS. Cards, from each class, were given to members of the FoSPS Committee and Mrs Winkcup, the Chair of FoSPS, cut a ribbon to officially 'open' the ship. The project took over two years to complete and we are very grateful to FoSPS for working so hard to raise the money. Many thanks FoSPS!

The classes have begun new topics. In Mercury and Mars classes, the children are finding out about the environment in a topic titled, 'At the bottom of the garden' and KS2 are exploring 'South America'.

Reach Fair took place on Bank Holiday Monday and some of our Year 5 and 6 children demonstrated maypole dancing and Molly dancing. In front of huge crowds the children skilfully performed a range of dances. There was also the opportunity to share some of the work that they had been doing as part of their project on WW1 in Reach Church. We heard a selection of poems and stories about some of the local men who fought in the war. Members of FoSPS took along their Barrow of Booze and made over £700 which is an incredible amount of money. Many thanks to all in Reach village for supporting the fundraising.

Year 3 children went to Bottisham Village College for a Mini-Olympics session with children from local schools. They participated in three activities before the rain arrived and had a fantastic time.

We have a residential trip to Aylmerton for Years 5 and 6, an outdoor week, swimming, a KS2 production, Sports Day, the Swaffham Olympics amongst others, to look forward to. Phew!

Hannah Curtis
Head teacher



Cambridge Open Studios: Nicola Killen



Molly dancing practice



Edward enjoying the new pirate ship

g



Celebrating the launch of the new pirate ship. Note Alice the parrot!

Little Windmills



Opening hours: 9.15-12.15, Monday-Friday.

For further information or to discuss availability please contact a member of the team.
Call 07803 671200 or email manager@littlewindmills.co.uk

Open Air Family Theatre
Cambridge Touring Theatre

Robin Hood The Musical

"....has families rolling around with laughter"
The Guardian

Burwell House

Saturday 11th July, 6.00pm
Workshop: 4.30pm (5-10yrs)
Tickets: 01638 741256

www.cambridgetouringtheatre.co.uk

**Tickets: Ad. £10.50, Conc. £8.50,
Family £36.00 (2+2/1+3),
Workshop £3.00, Under 3's free**

Pets Corner



Moth Baldwin at the Wine Tasting. Evidently a sophisticated dog

St Mary's Little Bears

Teddy Bears Picnic

Thursday 2nd July 2015



10 - 11.30 am
£2 per family
Bring your Teddy!
The Vicarage Garden
22 Isaacson Road
01638 741262



Star Curtains

Once a Year Fabric Sale
Saturday 19th September from 10.00am to 1.00pm
End of roll remnants etc from just £1.00
Make sure to put this in your diary!

Star Curtains, 2B Swan Lane Business Park, Exning CB8 7FN Tel: 01638 578700

☺ KIDS' PAGE

S	O	A	B	Q	F	T	H	W	C
U	U	E	R	T	L	R	O	Y	A
N	T	M	U	I	O	A	L	O	M
S	S	P	M	A	W	V	I	S	P
H	I	D	F	E	E	E	D	G	I
I	D	H	H	J	R	L	A	K	N
N	E	L	O	Z	S	X	Y	C	G
E	V	B	T	N	M	Q	S	W	E
R	T	B	E	A	C	H	Y	I	U
I	C	E	C	R	E	A	M	P	A

Summer Sunshine

Ice Cream Beach

Hot Outside

Flowers Holidays

Camping Travel

JOKES

What do sheep do on sunny days?
Have a baa-baa-cue!

What does the sun drink out of?
Sunglasses.

What is grey has four legs, a tail and a trunk?
A mouse on holiday!

What do frogs like to drink on a hot summer's day?
Croak-a-cola!

What's the best day to go to the beach?
A Sun-day!

What do sharks eat?
Fish and ships!

ANAGRAMS

Nussineh

=

.....

Igpanmc

=

.....

Ratelv

=

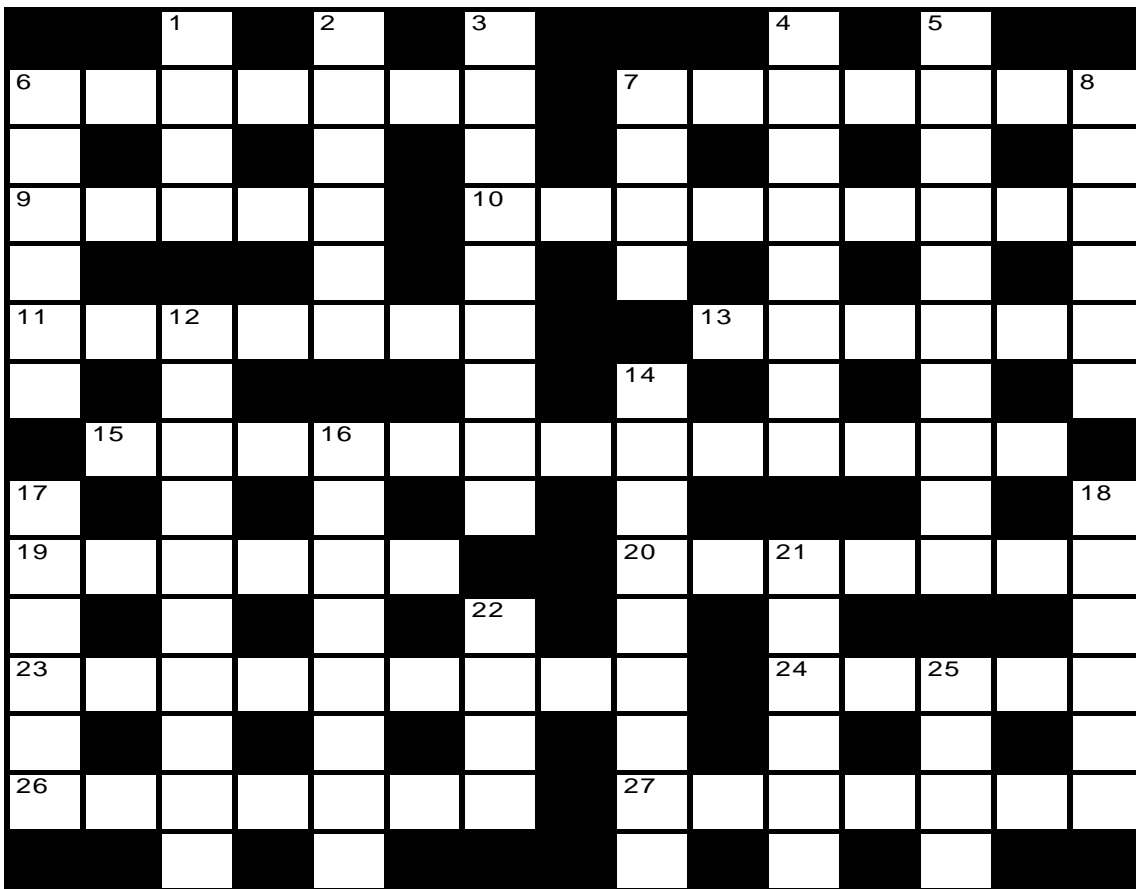
.....

Cheba

=

.....

Crossword No. 31



The answers to the previous crossword can be found on Page 24

Please send your entry to this crossword by Friday 3 July 2015 to:

CROSSWORD,
16 Chapel Lane, Reach
CB25 0JJ giving your name and address.

Across

- 6 Get some fresh air here (7)
- 7 Give Val four to make tasty (7)
- 9 Heart of the blue planet (5)
- 10 Let tiger come in shapely form (9)
- 11 Sound of music from here (7)
- 13 From head to foot (6)
- 15 Somewhere to stay (13)
- 19 Put together again (6)
- 20 Surf ale and don't do (7)
- 23 Stance Sid took for miles, or metres (9)
- 24 Find fruit in whole month (5)
- 26 Display people sound like short rain falls (7)
- 27 The money that we have to use (7)

Down

- 1 Backwards rodents for shiny body in sky (4)
- 2 Give her MOT as parent (6)
- 3 Watch on television, or set up machine to work (9)
- 4 Pound it like a PC does (8)
- 5 Lion became this through Dorothy (10)
- 6 A prose gives upper class music (6)
- 7 Does Kermit live in ones throat (4)
- 8 Speak aloud and show ire etc (6)
- 12 Coming after in line (10)
- 14 Where people live (9)
- 16 Rope date to perform surgery (8)
- 17 Suits in black dig around (6)
- 18 More than enough (6)
- 21 Go after someone next (6)
- 22 Cats, can be sorted, in holy book (4)
- 25 It might be a balloon or maybe not (4)



Swaffham Bulbeck Primary School Saturday 27 June

Cambridge United FC are offering
45 minute football sessions on
Saturday 27th June at
Swaffham Bulbeck Primary School
which includes matches using our inflatable
football pitches,
with all proceeds going to the school
as a fund-raiser



The sessions will be led by FA/UEFA qualified coaches and the children attending will have the opportunity to impress and gain a trial within the CUFC youth system. The sessions are charged at just £5 and children will require suitable footwear for both an indoor sports hall and school playground. On the day children will have the opportunity to meet the CUYD mascot Cyril, the Soccer Schools Squirrel!

Three sessions are being held at the following times:

11-11:45am, 12-12:45pm and 1-1:45pm

Places can be booked online at www.cuyd.co.uk

We hope to see you there!



Equestrian News

Over the past couple of months I have been very busy with shows, with Nina and Frances and getting the younger horses ready to compete.

At the end of March, I went to Cagnes-Sur-Mer in France to compete for two weeks with Frances. We had a great show, achieving an =1st, a 2nd and a 3rd in the 5/6 year old classes, which was a really great achievement as this was a big step up for Frances, as well as being my first international show and to do this on a horse I have produced myself is amazing. This week she has done her first couple of shows after a short break and has jumped double clear in Discovery and Newcomers which is great.



Since I have been back, my other horses have been coming along well, with Nina gaining all her Discovery double clears to qualify for second rounds and stepping up to Newcomers, which is great as I've had her for such a short time. Fleur, Stella and Vera are all coming along well. Fleur has been out schooling and is ready to go to a show soon, as is Stella. Vera is progressing really well and has started jumping and is showing great potential, so I'm looking forwards to seeing how she develops.



The fundraising for the arena project on the 24 Acres is going well. The stand at Reach Fair, which featured a Guess the Name of the pony competition and sold donated items, was very popular, raising over £300 for the project. Our miniature horse, Patrick, was used for the Guess the Name competition and was at the stall all day. He behaved very well and received lots of attention which he enjoyed. The stand was a great success. A fun ride has been organised in September to continue fundraising for the project, which is a great, fun way for people to get involved in the project!

Laura Steven

Newmarket Cycling and Triathlon Club



Newmarket Cycling
and Triathlon Club

Invites all cyclists and non-cyclists of all ages, male or female to come and try our indoor cycling on rollers; also on our grass track on Lode Passage sports ground.

We have bikes to suit all ages
Sunday 7 June, 10am to 12.30pm, Fassage Hall, Lode

For more details contact Dave Peck
(davehpeck@btinternet.com)

Cricket



Happiness is a sunny day and a cricket match that Reach can't lose. That is how it was for our grand season opener on Sunday 10 May, when Reach raised a whole two teams to lock horns. Mercifully, the original plan to have elders versus youth was abandoned when the oldies – perhaps arrogantly – decided they might be a bit strong against a youthful team. Instead, the Dennis boys, Jesse and Jem, were invited to choose two teams to do battle in a two innings match, each innings to last 15 overs.

Jesse's Classic XI (or rather X) won the toss and elected to bat first. After a slow start, and Jem clean-bowling his Dad for a duck, Tony Fordham took the initiative and knocked up 28 runs to take the team to 67 for 8 at the end of the 15 overs. Jem's team replied with an even more sluggish performance, knocking up a measly 46. The highlight was Grahame Radford taking a wicket with the first ball he had bowled in 30 years. There were wickets, too, for Hector Keutgen. Jesse struck back on behalf of his Dad to dismiss Jem for nought.

Complacency then set in. Carrying a lead of 21 into the second innings, Jesse's team hardly got going, accumulating a mere 35 more runs and setting Jem's team a target of 57 to win. It had taken until 5.30 in the evening, but the crowd finally got to see some real batting, with Phil Kingsmill scoring an unbeaten 31 to win the game, leaving an over-confident Jesse's XI to slope off into the sunset like Ed Miliband.

Hopefully, some of the young faces making their debut will be gracing the cricket pitch for decades to come. Some games for the rest of the season:

- Sun 31 May
Thriplow or Fordham Away (National Village Cup match)
- Sun 14 June
Castle Heddingham Away
- Sun 12 July
Swaffham Bulbeck Home
- Sun 26 July
Grantchester Away 2pm
- Sun 6 September
Burwell Home 1pm
- Sun 13 September
Swaffham Bulbeck Home 1pm
- Sun 27 September Rain Men Home 12.30pm



CAMBRIDGE news **BIG BIKE RIDE**
in conjunction with Cambridge County Council sponsored by STATION CYCLES
Sunday 5th July 2015

COME AND CYCLE 50 MILES OR 100 MILES ACROSS FOUR COUNTIES.
ALL of your entry fee goes to charity.

Sign up now at www.arhc.org.uk/bigbikeride
(for reduced entry fee sign up before 31st March)

Arthur Rank Hospice Charity
making every moment count

CAMBRIDGE Press Relief community fund
Enquiries?
01223 723115

Parish Council Meeting Draft Minutes



PARISH COUNCIL

Draft Minutes of Reach Parish Council meeting held on: Wednesday 13th May 2015.

Attendance

Michael Aves	Councillor	Present
Hannah Baldwin	Councillor	Not Present
Charlotte Cane	Councillor	Present
Hilary Fielding	Councillor	Present
Diana Ward	Councillor	Present
Susan Bailey	Clerk	Present
Allen Alderson	District Councillor	Present
David Brown	County Councillor	Not Present

1. Election Admin. & election of officers; Chair and Vice Chair.

Chair – Councillor Cane,
Vice Chair – Councillor Aves

2. Declarations of Interest

There were none.

3. LHI 2015/2016

The CCC project manager for this scheme attended the meeting to discuss the options available to the village. She had, prior to the meeting, quickly looked at the site. The purpose of the LHI scheme for Reach is to provide speed reduction into the village (from Swaffham Prior).

There are various options available, these include; improving the visibility of the speed signs as you enter the village, reducing the speed limit within the village, road markings, interactive signs and vertical features such as speed bumps.

Having discussed the scheme, the project manager will now inspect the site in more detail and produce plans and costs for the different options. The PC will then consult the village residents prior to making a decision on which option to proceed with.

4. Forum for members of the Public

Agenda item 8 - Churchfield Farm, Burwell Road, road safety concerns

The resident is concerned that several vehicles have now come off the road in this area and caused damage to fencing. This is a great concern as this field is often used to graze livestock which could cause additional accidents if they are able to get onto the road.

Following discussion, *the clerk* will contact CCC highways to see if anything can be done to reduce traffic speed in this area.

5. Minutes of Previous Meeting

The Minutes of the previous Parish Council meeting were signed as correct.

6 Parish council – Election of additional officers

The Election of the additional officers was postponed until the next meeting, as not all Councillors were present.

7 (1) Amenity Fund Committee

No Activity.

7 (2) County Councillor’s Report

No report provided.

7 (3) District Councillor’s Report

No report provided.

7 (4) Financial Report

At the end of the financial year the accounts show a small loss, this is due to the PC making several large payments and not having received repayment funds from the Amenity Fund. These have now been received.

7 (5) Parish Council Members Meetings

There were no meetings this month.

7 (6) Play Spaces

The safety report is in the process of being carried out.

7 (7) Rights of Way

Nothing to report.

7 (8) Village Centre

A copy of the minutes had been received, with thanks.

7 (9) 24Acres Committee Report

A meeting is being held later this month.

8. Churchfield Farm, Burwell Road, road safety concerns

Discussed, see above.

9. Planning Applications

There were none.

10. Information Items/AOB

It had been reported that the fire hydrant on the Green was not working. **Clerk** to investigate.

11. Payments

CR Contracting – Mowing contract	£ 416.00
Eon – street light electricity	£ 331.28

The date of the **next meeting** will be Wednesday 3rd June 2015 at 7.00pm. The Agenda for the meeting will be issued by the previous Wednesday and can be accessed from the Parish Council area of the Reach website (www.reach-village.co.uk).

Chairman:

Date:

Letter from the Vicarage

We're delighted to be holding a special service on July 5th to commemorate and give thanks for the generosity of Maisie Whitehead. Maisie liked traditional services, so we are planning Evensong at 3.30pm, followed by afternoon tea. We are delighted that children from Swaffham Prior School will be singing for us, which seems very fitting, as Maisie gave such a lot of her time to teaching in Sunday school in Reach. We would like to invite others to join the choir for this occasion and are moving our usual Friday evening choir practice to Reach, to make it easier for any singers to come along at 7pm and join in. If you want more information about the music please let me know. If you can help by providing sandwiches and cakes for the afternoon tea, please can you let Pam King know (742924).



By the time you read this, Phase 2 of our Building to Serve project at St Mary's will be complete. We're thrilled that this stage of the work is finally complete. It's been a long time from the first discussion of ideas, to seeing it all built. We hope that the new facilities will give us more scope for using the church for different events and activities and for other community groups to use new facilities for their own groups or events. We've begun the process for considering how we might develop the church in Reach, thanks to the generosity of Maisie's legacy and we are hoping that we will soon have some provisional drawings to look at for our newly-named 'Reach Out' project. In the meantime, the repair work to the exterior will be continuing and we will also be having a structural survey done, at the recommendation of our church architect, to investigate the overall structural stability of the building.

The St Mary's Church Fete is on Saturday 20th June at 2pm. We're finalising plans for a great event for all ages. There are also a number of other special events coming up. We have our annual Little Bears toddler service Teddy Bears' Picnic on July 2nd at the Vicarage from 10am and we are also holding another service of Renewal of Marriage Vows at St Mary's on July 12th at 3pm. Please contact Eleanor for information about taking part. And we have Messy Church, on Sundays 4 – 6pm 28th June and 19th July, for all the family – young, old and in between!

In recent months we've been delighted to hold several services of Thanksgiving for the Gift of a Child. I've been asked what the difference is between this service and Baptism, or Christening. In the Thanksgiving service, we thank God for the gift of the child and we pray for God to bless them. We also give them a Children's Bible. The parents do not make the same promises as in the Baptism service, so it is sometimes chosen by parents who do not feel able at that time to make the baptism promises, or prefer to wait until their child is old enough to understand and make the promises for themselves. If parents choose to have a Thanksgiving, they may also have a Baptism service for their child at a later date. Please get in touch if you would like to know more about Thanksgiving or Christening.

And finally, for those who've been missing the woofs, here we are - the sad and sorry tale of Echo and the lost parsnip ...

Please get in touch if you would like more information about this, or any of our services, groups or activities.



Eleanor Williams

Revd Dr Eleanor Williams, Vicar of Burwell with Reach
01638 741262 or vicar@stmarysburwell.org.uk



Cambridge Open Studios: Claire Cockayne

Church News

Project Name Competition

Thank you to everyone who took part in the competition to find a project name that we can use for the building developments in the church. The aim was to find something a bit catchier than 'the project to develop the church for community use using the legacy of Maisie Whitehead' that would reflect what we are trying to achieve. We had some interesting entries and the name chosen by the PCC is: "Reach Out". A small prize will be sent to Joe Smith.

CentrePeace @ Reach

Look out for some 'new lines' at CentrePeace in Reach on the second Wednesday of the month. As well as books and greeting cards, we're hoping to stock a wider range of items to tempt our customers. This may include crafts, some plants and maybe some homemade cakes and home grown produce. If you have any other suggestions of things you'd like us to stock or if you could offer things for sale, please talk to Pam King or contact me on pat@patchcs.co.uk. Please note that we don't have space to store a large quantity of second hand goods like bric-a-brac or clothes, but we are open to considering practical ideas.

Of course, you don't have to buy things when you come, you can just have free tea and cake! Dates for the rest of this year are listed below and we're in the church from 2pm till 4pm:

June 10 th	October 14 th
July 8 th	November 11 th
August 12 th	December 9 th
September 9 th	

Concert and BBQ

On Friday 17th July there will be a concert in St Mary's Church, Burwell at 6.30pm, followed at about 7.30pm by a BBQ. Music will be provided by Stour Winds, a double wind decet and will include works by E Bernard, J Haydn and J Reicha. Wine and soft drinks will be available. Altogether the perfect way to relax after a busy week! Tickets will cost £5 (under 16's £2.50), which includes and will be on sale soon. Please contact administrator@stmarysburwell.org.uk for more information or to reserve your tickets.

Answers to Susie's anagrams:

Sunshine, camping,
travel and beach

Know Your Parish Council

Your councillors are:

Michael Aves	Vice Chair	742800
Charlotte Cane	Chair	741064
Hilary Fielding	Councillor	741853
Hannah Baldwin	Councillor	07702 813845
Diana Ward	Councillor	744210

Your Clerk is **Susan Bailey**

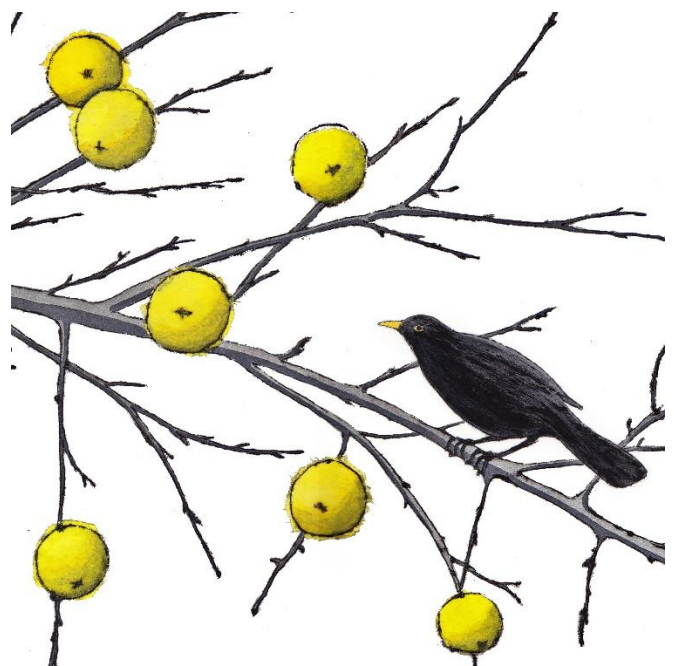
29 Great Lane Reach CB25 0JF

Tel: 01638 743794

Email: reachparishcouncil@live.co.uk

Meetings take place in the Village Centre on the first Wednesday of each month. They start at 7.30pm and all Reach villagers are welcome to attend.

In addition to her councillor duties **Hilary Fielding** is Rights of Way Officer.



Cambridge Open Studios: Alison Hullyer

Church Services at Burwell and Reach

	St Mary's Burwell	St Etheldreda's Reach
JUNE		
Wednesday 3 rd	10.00am Holy Communion 11.00am Holy Communion at Ash Grove	
Thursday 4 th	10.00am Little Bears	
Friday 5 th		8.15am Morning Prayer
Sunday 7th June Trinity 1	8.00 am Holy Communion 10.00 All Age Service	
Wednesday 10 th	10.00am Holy Communion	2.00 – 4.00pm CentrePeace at Reach
Friday 12 th		8.15am Morning Prayer
Sunday 14th June Trinity 2	10.00am Parish Communion (Traditional)	8.00am Holy Communion
Wednesday 17 th	10.30am Holy Communion at Ness Court	
Friday 19 th		8.15am Morning Prayer
Sunday 21 st June Trinity 3	8.00 am Morning Prayer 10.00am Parish Communion (Contemporary)	
Wednesday 24 th	10.00am Holy Communion	
Friday 26 th		8.15am Morning Prayer
Sunday 28th June Trinity 4	8.00am Holy Communion 10.00am Parish Communion (Traditional) 4.00pm Messy Church	
JULY		
July Wednesday 1 st	10.00am Holy Communion 11.00am Holy Communion at Ash Grove	
Thursday 2 nd	10.00am Little Bears Teddy Bears Picnic at The Vicarage	
Friday 3 rd		8.15am Morning Prayer
Sunday 5th Trinity 5	8.00am Holy Communion 10.00am All Age Service	3.30pm Evensong followed by Tea to celebrate the life of Maisie Whitehead and to give thanks for her generosity.
Wednesday 8 th	9.00am Prayer Meeting 10.00am Holy Communion	2.00 – 4.00pm CentrePeace
Friday 10 th		8.15am Morning Prayer
Sunday 12th Trinity 6	10.00 Parish Communion (Traditional)	8.00am Holy Communion
Wednesday 15 th	10.00am Holy Communion	
Friday 17 th		8.15am Morning Prayer
Sunday 19th Trinity 7	8.00am Holy Communion 10.00 am Parish Communion (contemporary) 4.00pm Messy Church	
Wednesday 22 nd	10.30am Holy Communion at Ness Court	
Friday 24 th		8.15am Morning Prayer
Sunday 26th Trinity 8	8.00am Holy Communion 10.00 Parish Communion with baptism	
Wednesday 29 th	10.00am Holy Communion	
Friday 31 st		8.15am Morning Prayer

Bus Timetable

Reach is served by the 10/10A bus service, provided by Stagecoach.

The difference between the 10 and 10A services is that the 10 travels via Valley Way in Newmarket whilst the 10A uses Noel Murless Drive.

A summary of all buses serving Reach and/or Swaffham Prior Monday to Saturday is shown below.

Please note that there is no bus service at all on Sundays.

Newmarket – Burwell – Reach – Bottisham – Cambridge																
Service No:	10	10	10	10	10	10	10	10	10	10	10		10	10	10	10
	M-F	M-F	Sat	M-F	Sat								Sat	M-F		
Newmarket (Guineas Station)				0704	0719	0814	0914	1014	1114	1214	1314	1414	1424	1514	1614	1714
Burwell (Manchetts Ness Road)	0628	0658	0713	0728	0743	0838	0938	1038	1138	1238	1338	1438	1448	1538	1638	1738
Reach	0639	0709	0724			0849		1049		1249		1449	1459	1549	1649	1749
Swaffham Prior	0644	0714	0729	0741	0756	0854	0951	1054	1151	1254	1351	1454	1504	1554	1654	1754
Cambridge (Drummer Street)	0727	0807	0812	0837	0842	0937	1037	1137	1237	1337	1437	1537	1547	1637	1737	1837

Cambridge – Bottisham – Reach – Burwell – Newmarket																
Service No:	10	10A	10	10	10A	10	10	10	10	10	10		10	10	10	10
				M-F	NMD											
Cambridge (Drummer Street)				0655	0755	0825	0925	1025	1125	1225	1325	1425	1525	1635	1735	1845
Swaffham Prior				0729	0829	0902	0959	1102	1159	1302	1359	1502	1559	1712	1809	1919
Reach				0735	0835		1005		1205		1405		1605		1815	1925
Burwell (Haw thorn Way)				0742	0842	0912	1012	1112	1212	1312	1412	1512	1612	1722	1822	1932
Newmarket (Guineas Station)				0810	0910	0940	1040	1140	1240	1340	1440	1540	1640	1800		

M-F - these buses run on Monday to Friday only
 NMD - this bus calls at Noel Murless Drive at 0905
 Sat - these buses run on Saturday only

A full timetable can be downloaded from www.reach-village.co.uk/bus_service.html

Please note that the bus stops at a number of stops in Burwell – those listed are just timing points

Diary Dates: June 2015

June 2015	Event	Location	Time
Tues 2	Cambridgeshire Community Fair	Burgess Hall St Ives	See Page 11
Wed 3	Parish Council Meeting	Village Centre	7.30pm
Thurs 4	Recycling Day (Green)		
Sun 7	Indoor Cycling System	Fassage Hall, Lode	10am – 12.30pm
Tues 9	Swaffham Prior Village Gardeners: Evening visit to Upwater Lodge, Cambridge		
Wed 10	CentrePeace	St Etheldreda's	2.00pm to 4.00pm
Thurs 11	Recycling Day (Blue)		
Wed 10 – Sat 13	The Gondoliers	Swaffham Bulbeck Summer Theatre	See Page 17
Sun 14	Heritage Walk	Swaffham Prior	2 – 4pm See Page 31
Sun 14	Fun on the Farm	Burwell Museum	01638 605544
Sun 14	Lode with Longmeadow Village Fete	Fassage, Lode	
Tues 16	Mobile Library	Village Green	12.15pm to 12.50pm
Wed 17	Village Centre Committee Meeting	Village Centre	8.00pm
Thurs 18	Recycling Day (Green)		
Sat 20	Village Feast	Swaffham Prior	PM
Sat 20	Echoes from the Western Front	Swaffham Prior St Cyriac's Church	5.30pm for 6pm
Sat 20 – Sun 21	Midsummer Market	Swaffham Prior St Cyriac's Church	11am – 5pm
Sun 21	Anglesey Gospel Choir	Swaffham Prior St Cyriac's Church	2.30 – 3pm
Sun 21	Classic and Vintage Cars	Prickwillow Drainage Museum CB7 4UN	11am – 4.30pm
Tues 23	Brightlingsea	Burwell Museum Coach Trip	Tickets from Tina's; £16
Thurs 25	Recycling Day (Blue)		
Thurs 25	Reach Solar Farm AGM	Village Centre	
Sat 27	Football Session	Swaffham Bulbeck Primary School	Page 37
Sat 27	Wicken Fete	Wicken	
Sat 27	Village Street Market	Swaffham Bulbeck	11am – 4pm
Sat 27	Bottisham Ball 2015	Bottisham Village College	7pm - Midnight
Sun 28	Open Gardens	Lode Village	11am – 5pm

Diary Dates: July 2015

July 2015	Event	Location	Time
Wed 1	Parish Council Meeting	Village Centre	7.30pm
Thurs 2	Teddy Bears Picnic	Vicarage garden, 22 Isaacson Road, Burwell	10am – 11am
Sat 4 – Sun 5	Outside Edge Art Group	Swaffham Prior St Cyriac's Church	11am – 6pm
Sun 5	Evensong followed by Afternoon Tea To commemorate and thank Maisie Whitehead	St Etheldreda's Church	3.30pm
Thurs 2	Recycling Day (Green)		
Wed 8	CentrePeace	St Etheldreda's	2.00pm to 4.00pm
Thurs 9	Recycling Day (Blue)		
Sat 11	Robin Hood, The Musical	Burwell House	See Page 34
Sat 11 – Sun 12	Outside Edge Art Group	Swaffham Prior St Cyriac's Church	11am – 6pm
Sun 12	Fete	Burwell Museum	01638 605544
Tues 14	Village Gardeners: Evening visit to Netherhall Manor, Soham		See Page 15
Wed 15	Village Centre Committee Meeting	Village Centre	7.30pm
Thurs 16	Recycling Day (Green)		
Fri 17	Concert and BBQ	St Mary's Church, Burwel	6.30pm Concert; 7.30pm BBQ
Sat 18	Flower and Produce Show	Wicken	
Tues 21	Mobile Library	Village Green	2.15pm
Thurs 23	Recycling Day (Blue)		
Tues 28	Cromer and Wells	Burwell Museum Coach Trip	Tickets from Tinas; £16
Thurs 30	Recycling Day (Green)		

Wednesdays 7.30pm onwards **Bell ringing at Swaffham Bulbeck** – new recruits are welcome

Events with **Authors and Reading Group** are organised by Topping bookshop, Ely 01353 645005 or www.toppingbooks.co.uk

Burwell Museum website is www.burwellmuseum.org.uk **Tel:** 01638 605544

Club Contact Information

Club	Contact	Tel
Brownies (Burwell)	Heather Dean	615521
Carpet Bowls (Swaffham Prior)	David Folkes	745551
Cubs (Swaffham Prior)	Steve White	743555
Cricket (Reach)	Ross Clark	743725
Gardeners (Village, Swaffham Prior)	Margaret Joyce	744390
Mothers Union (Burwell)	Susan Baker	741791
Scouts (Swaffham Prior)	Steve White	743555
Tennis (Reach)	Philip Lewis	742115
Youth Club (Swaffham Prior)	Alan Badcock	742228

Contact Information

Parish Council			
	Vice Chair	Michael Aves	742800
	Chair	Charlotte Cane	741064
	Councillor	Hilary Fielding	741853
	Councillor	Diana Ward	744210
	Councillor	Hannah Baldwin	
	Clerk	Susan Bailey	743794
	Rights of Way Officer	Hilary Fielding	741853
	County Councillor	David Brown	743283
	District Councillor	Allen Alderson	741744
Village Centre			
	Chairman	Grahame Radford	742814
	Finance	Hugh de Lacy	
	Bookings	Grahame Radford	742814
	Marquee Bookings	Andrew Hall	743737
Amenity Fund Committee			
	Committee Member	Claire Halpin-McDonald	743330
	Committee Member	John Holmwood	742969
	Committee Member	Andrew Towers	742484
	Committee Member	Diana Ward	744210
	Burwell and Reach Car Scheme		01638 742543
Church			
	Vicar	Eleanor Williams	741262
	Reader in Training	Frances Leadon	741770
	Priest in Retirement	Reverend David King	742924
	Parochial Church Council Member	Pam King	742924
	Churchwarden at Burwell/Reach	Simon Rogers	741205
	Churchwarden at Burwell/Reach	Stephen Walton	744214
Emergencies			
	Electricity (Eastern Electric)		0800 783 8838
	Police (Emergency)		999
	Police (Non-emergency)		101
	Water (Anglian Water)		08457 145145
Doctors, Burwell			
	Appointments and Emergencies		741234
	Enquiries		743602
	Community Nurses		742382
	Surgery Hours	Mon 8.30am to 6.00pm with extended hours on a Monday please phone the surgery for details	